

Semi-annual, annual and Universal Time variations in the magnetosphere and in geomagnetic activity: 2. Response to solar wind power input and relationships with solar wind dynamic pressure and magnetospheric flux transport

Mike Lockwood^{1,*}, Kathryn A. McWilliams², Mathew J. Owens¹, Luke A. Barnard¹, Clare E. Watt¹, Chris J. Scott¹, Allan R. Macneil¹, and John C. Coxon³

¹ Department of Meteorology, University of Reading, RG6 6BB Reading, UK

² Institute of Space and Atmospheric Studies, University of Saskatchewan, Saskatoon, SK S7N 5A5, Canada

³ School of Physics and Astronomy, University of Southampton, SO17 1BJ Southampton, UK

Received 13 September 2019 / Accepted 22 June 2020

Abstract—This is the second in a series of papers that investigate the semi-annual, annual and Universal Time (*UT*) variations in the magnetosphere. We present a varied collection of empirical results that can be used to constrain theories and modelling of these variations. An initial study of two years' data on transpolar voltage shows that there is a semi-annual variation in magnetospheric flux circulation; however, it is not as large in amplitude as that in geomagnetic activity, consistent with the latter showing a non-linear (quadratic) variation with transpolar voltage. We find that during the persistent minimum of the *UT* variation in geomagnetic activity, between about 2 and 10 *UT*, there is also a persistent decrease in observed transpolar voltage, which may be, in part, caused by a decrease in reconnection voltage in the nightside cross-tail current sheet. We study the response of geomagnetic activity to estimated power input into the magnetosphere using interplanetary data from 1995 onwards, an interval for which the data are relatively free of data gaps. We find no consistent variation in the response delay with time-of-year *F* and, using the optimum lag, we show that the patterns of variation in *F*-year spectrograms are very similar for geomagnetic activity and power input into the magnetosphere, both for average values and for the occurrence of large events. The Russell–McPherron (R–M) mechanism is shown to be the central driver of this behaviour. However, the (R–M) effect on power input into the magnetosphere is small and there is a non-linear amplification of the semi-annual variation in the geomagnetic response, such that a very small asymmetry in power input into the magnetosphere P_x between the “favourable” and “unfavourable” polarities of the IMF B_Y component generates a greatly amplified geomagnetic response. The analysis strongly indicates that this amplification is associated with solar wind dynamic pressure and its role in squeezing the near-Earth tail and so modulating the storage and release of energy extracted from the solar wind. In this paper, we show that the equinoctial pattern is found in the residuals of fits of P_x to the *am* index and that the amplitude of these equinoctial patterns in the *am* fit residuals increases linearly with solar wind dynamic pressure. Similarly, the *UT* variation in *am* is also found in these fit residuals and also increases in amplitude with solar wind dynamic pressure.

Keywords: geomagnetic activity / semi-annual variation / solar wind magnetosphere coupling

1 Introduction

Paper 1 in this series (Lockwood et al., 2020, hereafter “Paper 1”) reviewed the semi-annual variation in geomagnetic activity, as seen in a number of indices, and highlighted a

number of puzzles that require explanation. We study these in the present paper empirically using the power input into the magnetosphere, P_x , deduced from interplanetary measurements using the formula that was originally derived theoretically by Vasyliunas et al. (1982) from dimensional analysis. This formula is given by equation (2) of Paper 1 and the derivation has also recently been given, and expanded upon, by

*Corresponding author: m.lockwood@reading.ac.uk

Lockwood (2019). Analysis by Finch & Lockwood (2007) showed that P_α performed consistently better than a basket of other widely-used solar-wind/magnetosphere coupling functions on all averaging timescales tested (between 1 day and 1 year). An important consideration for all coupling functions was studied by Lockwood et al. (2019a), namely the effect of data gaps. These have often been ignored on the grounds that their effects average out, but this was shown not to be the case by Lockwood et al. who introduced synthetic data gaps into near-continuous data. This analysis revealed that data gaps add noise to the correlation studies and lead to erroneous fits. In particular, there is a problem with “overfitting”, whereby the use of too many free fit parameters can generate seemingly good fits to the training data by fitting to the noise, leading to incorrect fits that have reduced, little or even, in extreme cases, zero predictive power when applied to data other than the training dataset. Overfitting is a problem that is well recognized in disciplines such as climate science and population studies but has not often been considered in space physics. A key point about P_α is that it has just one free fit parameter, the coupling exponent α , and this minimises the risk of overfitting. At the same time, P_α makes allowance for solar wind speed, V_{SW} , number density, N_{SW} , mean ion mass, m_{SW} , and Interplanetary Magnetic Field (IMF) strength, B , as well as an orientation factor, A_θ . The test devised by Vasyliunas et al. (1982) shows that the optimum form of A_θ is $\sin^4(\theta/2)$, where θ is the IMF clock angle in the GSM frame (see the supporting information file to Lockwood et al., 2019b and Sect. 1.1). These factors could all be given their own fit exponent but this greatly increases the risk of overfitting; to avoid this P_α uses the theory to make the exponent of each variable a fixed function of the one free fit parameter, α .

As also discussed in Paper 1, P_α is based on the dominant energy flux in the solar wind, namely the bulk-flow kinetic energy flux of the particles, whereas some other coupling functions incorrectly use the Poynting flux in the solar wind, which is very small in comparison. The energy input to the magnetosphere across the magnetopause is in the form of Poynting flux, but most of that is generated from the bulk-flow solar wind kinetic energy by currents that flow in the bow shock and magnetosheath (Cowley, 1991; Lockwood, 2004, 2019; Pulkkinen et al., 2016). Lockwood (2019) has recently added the minority solar wind Poynting flux to the Vasyliunas et al. (1982) formulation for P_α at the expense of adding a second free fit parameter. The improvements to the correlations with geomagnetic activity are sometimes statistically significant but only on short timescales and they are always extremely small. We do not here include this additional term in solar wind Poynting flux because it increases the risk of overfitting.

One particular puzzle about the semi-annual variation in geomagnetic activity is the origin of the equinoctial pattern of geomagnetic response with time-of-year, F , and Universal Time, UT (de La Sayette & Berthelier, 1996; Cliver et al., 2000; Chambodut et al., 2013). This has been a matter of debate, with a large number of mechanisms proposed as to how the implied association with Earth’s dipole tilt originates and it is not clear which, if any, of the proposed mechanisms is active (see review in Sect. 1 of Paper 1).

A related, unexplained feature, also highlighted by Paper 1, is that the semi-annual variation in geomagnetic activity is undoubtedly caused by the modulation of power input into the magnetosphere P_α by the Russell–McPherron (R–M) effect

(Russell & McPherron, 1973) but is amplified, being of larger fractional amplitude in most geomagnetic indices than in P_α . The need for some such amplification was noted by Russell and McPherron in their original paper but the mechanism responsible for it has never been identified.

There is a third major puzzle concerning large storms. The R–M mechanism is based on the idea that the IMF lies close to its average orientation, parallel to the solar equatorial plane (the XY plane of the Geocentric Solar Ecliptic, GSEQ, reference frame) and that the component in the $+Y$ or $-Y$ direction of GSEQ is converted into “geoeffective” southward field in the Geocentric Solar Magnetospheric (GSM) reference frame by the tilt of Earth’s magnetic moment in the YZ plane. This tilt sets the consequent rotation of the GSM frame with respect to the GSEQ frame about their common X -axis. The GSEQ and GSM reference frames are organised with respect to the solar rotation axis and the Earth’s magnetic dipole axis, respectively, and formal definition and discussion of both is given in Paper 1. The R–M effect predicts that, through the dipole tilt effects on the rotation between the GSEQ and GSM frames, the IMF field with $[B_Y]_{GSEQ} < 0$ gives southward field in the GSM frame ($[B_Z]_{GSM} < 0$) around the March equinox, whereas $[B_Y]_{GSEQ} > 0$ generates southward field in GSM around the September equinox. Hence, as noted by Zhao & Zong (2012), splitting the data into these two polarities of $[B_Y]_{GSEQ}$ allows us to directly identify the contribution of the R–M effect by which of the two equinoxes is enhanced by which polarity of $[B_Y]_{GSEQ}$. We here refer to the $[B_Y]_{GSEQ}$ polarity which, at a given equinox, increases/decreases the southward $[B_Z]_{GSM}$ (and hence increases/decreases geomagnetic activity) as the “favoured”/“unflavoured” polarity. Paper 1 uses this dependence on the IMF $[B_Y]_{GSEQ}$ polarity to reveal that the R–M effect is at the heart of the equinox peaks of several parameters, including: mean power input into the magnetosphere, P_α ; the mean of the am geomagnetic index; and of the occurrence of both P_α and am values in the top 5% of their overall distributions, $f[P_\alpha > q(0.95)]$ and $f[am > q(0.95)]$, respectively. Interestingly, this means that the R–M effect is at the heart of even the equinoctial-like time-of-day (UT) – time-of-year (F) patterns seen for geomagnetic data, which, as discussed in Paper 1, are distinct from the pattern that is predicted for the R–M effect. Hence, although the equinoctial patterns indicate that another mechanism is at work, the core cause of their semi-annual variation is undoubtedly the R–M effect.

The occurrence of large storms generates another puzzle in relation to the R–M effect because it has long been recognized that the largest storms are produced by interplanetary disturbances during which the IMF, at some stage at least, points strongly southward in the GSM frame (e.g., Taylor et al., 1994; Webb et al., 2000; Echer et al., 2005; Xie et al., 2006; Kilpua, et al., 2017; Li & Yao, 2020). Crooker et al. (1992) proposed a mechanism to give the observed increased occurrence of large storms at the equinoxes that is consistent with the R–M effect by arguing that in the CME sheath the IMF remains in the equatorial plane of the GSEQ frame but its component in the $\pm Y$ direction is enhanced by the compression due to the event. This enhanced equatorial $[B_Y]_{GSEQ}$ is then converted into enhanced southward field in the GSM frame by the R–M effect. However, Lockwood et al. (2016) and Paper 1 show unambiguously that large southward field in GSM is almost always associated with large southward field in GSEQ, and not the

near-zero southward field that Russell & McPherron (1973) and Crooker et al. (1992) invoked in applying the R–M mechanism. Appendix B of Paper 1 shows that when there is a dominant southward component of the IMF in the GSEQ frame, far from enhancing the geoeffective southward component in GSM, the R–M effect actually reduces it. Paper 1 therefore highlights a paradox in that although the R–M effect is clearly at work to enhance average geomagnetic disturbance levels and the occurrence of small and moderate geomagnetic disturbances, large disturbances are driven by out-of-equatorial southward field in GSEQ (usually deflected out of the solar equatorial plane by a CME or CIR) for which the R–M effect actually tends to reduce the southward component in GSM and hence the geo-effectiveness of the event. Hence the observed equinoctial peaks in the occurrence of large storms are not attributable to the R–M effect, at least not directly, in the same way that the peaks for smaller disturbances and average conditions are.

This point is further emphasised here by Figure 1, which is an update of the plot by Lockwood et al. (2016). It compares the northward component of the IMF in the GSEQ frame ($[B_Z]_{\text{GSEQ}}$) to that in the GSM frame ($[B_Z]_{\text{GSM}}$), both averaged over 3-h intervals that 1 h ahead of the 3-h intervals in which the geomagnetic activity level is measured (here quantified by the am index). In other words, we have employed an average response lag of the am index to the IMF orientation of $dt_o = 1$ h (see Sect. 3.3 below). The plots show the numbers of samples, N , in bins of width 2 nT in both $[B_Z]_{\text{GSEQ}}$ and $[B_Z]_{\text{GSM}}$. The data cover 1995–2017, inclusive, the interval of near-continuous IMF observations. Results are shown for: (a) all data; (b) am exceeding its 90-percentile, $am > q(90)$ (i.e., am is in the top 10% of all its measured values); (c) am exceeding its 95-percentile, $am > q(95)$; and (d) am exceeding its 99-percentile, $am > q(99)$. Figure 1 confirms the result presented in Paper 1, that large $[B_Z]_{\text{GSEQ}} < 0$ is actually the dominant driver of large southward field in the GSM frame ($[B_Z]_{\text{GSM}} < 0$) and the R–M effect gives relatively minor deviations from the diagonal mauve line that is at $[B_Z]_{\text{GSEQ}} = [B_Z]_{\text{GSM}}$. It can be seen that for larger geomagnetic events, the IMF data are increasingly in the $[B_Z]_{\text{GSEQ}} < 0$, $[B_Z]_{\text{GSM}} < 0$ sector. Note that there are some exceptions to this with a small number values in the $[B_Z]_{\text{GSEQ}} > 0$, $[B_Z]_{\text{GSM}} > 0$ sector: these can be attributed to the fact that using a 3-h prior IMF orientation averaged over 3 h with a lag dt_o of 1 h is not always appropriate (see Sect. 3.3). The pure R–M effect invokes $[B_Z]_{\text{GSEQ}} = 0$ and so points would lie along the vertical white line only: the small deviations from the diagonal show that the R–M effect is contributing much less to $[B_Z]_{\text{GSM}} < 0$ than does $[B_Z]_{\text{GSEQ}} < 0$ in most cases. In Figure 1a (for all data), the R–M effect causes both increases and decreases in $[B_Z]_{\text{GSM}}$ around $[B_Z]_{\text{GSEQ}} = 0$, as expected and depending on the polarity of the IMF $[B_Y]_{\text{GSEQ}}$. For small, moderate and some large geomagnetic disturbances (Figs. 1b–1d), respectively we see more points below the mauve diagonal line at small $[B_Z]_{\text{GSEQ}}$ which demonstrates that the R–M effect is having an effect (by making $[B_Z]_{\text{GSM}}$ more negative during the favourable polarity of $[B_Y]_{\text{GSEQ}}$ and so enhancing the am index). However, for large disturbances (Fig. 1d) and strongly negative $[B_Z]_{\text{GSEQ}}$ there are actually more points above the diagonal mauve line than below it, showing the R–M effect is tending to reduce the southward field in GSM in these cases, as predicted in Appendix B of Paper 1.

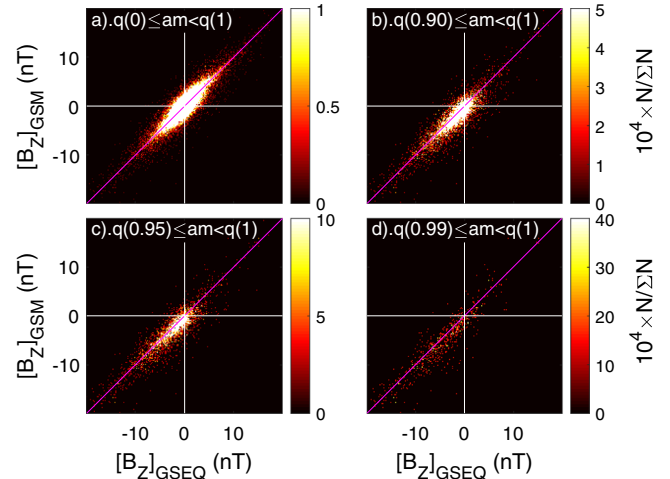


Fig. 1. The southward interplanetary magnetic field (IMF) in the Geocentric Solar Magnetospheric (GSM) frame, $[B_Z]_{\text{GSM}}$ as a function of its value in the Geocentric Solar Equatorial (GSEQ) frame, $[B_Z]_{\text{GSEQ}}$ from a survey of 24 years’ interplanetary and geomagnetic activity data (1995–2017, inclusive). The number of samples in 0.2 nT-by-0.2 nT bins, N , as a ratio of the total number, ΣN , is colour contoured as a function of $[B_Z]_{\text{GSM}}$ and $[B_Z]_{\text{GSEQ}}$. The data are averages over 3-h intervals for 1995–2017, inclusive, which are the intervals over which each am value is compiled, shifted by an average optimum am response lag $dt_o = 1$ h (see Sect. 3.3). (a) Is for all data whereas (b–d) are for am exceeding, respectively, its 90%, 95% and 99% quantile for the years studied. The diagonal mauve lines are $[B_Z]_{\text{GSEQ}} = [B_Z]_{\text{GSM}}$.

1.1 The paradox of the R–M effect and of southward field in the GSEQ frame

Figure 2 is a demonstration of the important point made in Appendix B of Paper 1. The graphs are taken from the supporting information to Lockwood et al. (2019b), in which their derivation is explained in greater detail. This plot demonstrates the test of IMF orientation factors, A_θ , in solar-wind magnetosphere coupling functions that was devised by Vasyliunas et al. (1982) and evaluates the various proposed forms for A_θ . The black dots are based on the geomagnetic SML index data (the SuperMAG version of the auroral AL index but compiled from a northern hemisphere network of over 100 stations) and show a linear regression of SML/G against θ where G is the best-fit estimate of the power input into the magnetosphere from solar wind data but without an IMF orientation factor (i.e., $G = P_\infty/A_\theta$) and θ is the IMF “clock angle” in the GSM frame, $\theta = \arctan(|[B_Y]_{\text{GSM}}|/|[B_Z]_{\text{GSM}}|)$. Note that this definition means that θ is independent of the polarity of $[B_Y]_{\text{GSM}}$ and that θ varies from zero for purely northward IMF in GSM ($[B_Z]_{\text{GSM}} = B_{YZ}$, where B_{YZ} is the magnitude of the field in the YZ plane that is the same in the GSEQ, GSE, and GSM reference frames) to 180° for purely southward IMF in GSM ($[B_Z]_{\text{GSM}} = -B_{YZ}$). It can be seen from Figure 2 that the optimum fit to the SML data is for $A_\theta = \sin^4(\theta/2)$ (the blue line). Almost identical plots to Figure 2 for the AE and am geomagnetic indices have been presented in Figure 4 of Bargatze et al. (1986) and Figure 9 of Lockwood (2019), respectively. The original formulation of the R–M effect by Russell & McPherron

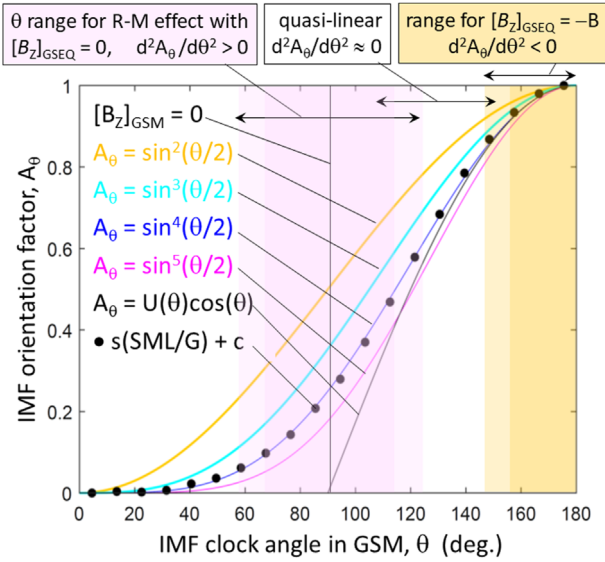


Fig. 2. The test devised by Vasyliunas et al. (1982) of proposed IMF orientation factors, $A_\theta(\theta)$, where θ is the IMF clock angle in the GSM frame: (orange line) $\sin^2(\theta/2)$; (cyan line) $\sin^3(\theta/2)$; (blue line) $\sin^4(\theta/2)$; (mauve line) $\sin^5(\theta/2)$; and (black line) $U(\theta)\cos(\theta)$, where $U(\theta) = 0$ for $[B_Z]_{\text{GSM}} > 0$ and $U(\theta) = 1$ for $[B_Z]_{\text{GSM}} \leq 0$. The black dots are $s(SML/G) + c$ where s and c are the best-fit linear regression coefficients, SML is the SuperMAG westward electrojet index, and $G = P_\alpha/A_\theta$, where P_α is the best fit estimate of the power input into the magnetosphere. The dark pink shaded area is the range over which θ varies due to the R–M effect for $[B_Z]_{\text{GSEQ}} = 0$ (i.e., IMF lying in the solar equatorial plane) and the range of variation of the dipole tilt over a full year caused by Earth’s rotational axis tilt. The light pink area is for the full range caused by the annual variation plus the diurnal variation due to the offset of Earth’s rotational and magnetic axes. The light and dark orange regions are the corresponding ranges for $[B_Z]_{\text{GSEQ}} = B$ (i.e., purely southward field normal to the solar equatorial plane).

(1973) used the average IMF orientation with $[B_Z]_{\text{GSEQ}} = 0$, for which the rotation between the GSEQ and GSM frames will cause θ to vary over a year (with fraction of the year F and UT) between $90 - 33.5 = 56.5^\circ$ and $90 + 33.5 = 123.5^\circ$ (the range shaded light pink in Fig. 2). In addition, the area shaded dark pink shows the range for the annual effect of the Earth’s orbit without the UT effect. In these ranges of θ , the optimum A_θ is increasing in gradient (i.e., $d^2A_\theta/d\theta^2 > 0$). This is true for all the proposed coupling functions shown except $\sin^2(\theta/2)$ (in orange), which we do not consider as it is not a good fit to the data (for all tested geomagnetic indices, the $A_\theta = \sin^4(\theta/2)$ formulation yields the best fit). The original R–M paper employed a “half-wave rectified” coupling function such as $U(\theta)\cos(\theta)$ (shown in black) where $U(\theta) = 0$ for $[B_Z]_{\text{GSM}} > 0$ and $U(\theta) = 1$ for $[B_Z]_{\text{GSM}} \leq 0$ for which the change in slope (with $d^2A_\theta/d\theta^2 > 0$) all takes place at $\theta = 90^\circ$. The non-linearity of the $A_\theta(\theta)$ curve around $\theta = 90^\circ$ is vital to the R–M explanation of the semi-annual variation. This is because the distribution of θ values in the GSM frame will be approximately symmetric around a mode value of 90° . However, the non-linearity in A_θ means that increases in geomagnetic activity for $\theta > 90^\circ$ (caused by the “favourable” polarity of $[B_Y]_{\text{GSEQ}}$

at a given F) will be greater in amplitude than the decreases caused by $\theta < 90^\circ$ (caused by the other, “unfavourable” $[B_Y]_{\text{GSEQ}}$ polarity). Hence the net effect in this case is a rise in average activity and this provides the R–M explanation of the semi-annual variation even though the occurrence of favourable $[B_Y]_{\text{GSEQ}}$ is the same as that of unfavourable $[B_Y]_{\text{GSEQ}}$. The same applies for all coupling function that show $d^2A_\theta/d\theta^2 > 0$ around $\theta = 90^\circ$.

However, contrast this to what happens if $[B_Z]_{\text{GSEQ}}$ is not zero but rather is strongly negative, as is the case for the solar wind transients that drive most major geomagnetic disturbances (as demonstrated by Fig. 1). At θ near 120° all the A_θ coupling functions become approximately linear ($d^2A_\theta/d\theta^2 \approx 0$). This means that there is no longer an R–M effect because the effects of the “favourable” increases in θ are cancelled by the effects of the “unfavourable” decreases in θ . At the largest θ , $d^2A_\theta/d\theta^2 < 0$. Here the dark and light orange regions are the ranges in θ caused by the annual and the annual-plus- UT variations in dipole tilt, respectively, for $[B_Z]_{\text{GSEQ}} = -B_{YZ}$ (purely southward field normal to the solar equator). In this case, any effect of the dipole tilt reduces the value of A_θ and so has the opposite effect to the classical R–M effect (which relies on $[B_Z]_{\text{GSEQ}}$ being near zero). This point is made in greater detail in Appendix B to Paper 1.

The key point is that the non-linearity in A_θ , upon which the R–M effect depends, is present only for small $[B_Z]_{\text{GSEQ}}$. A large $[B_Z]_{\text{GSEQ}}$ contribution to $[B_Z]_{\text{GSM}}$ during large geomagnetic events (as shown in Fig. 1) means that the coupling function is far removed from the part of the response curve with the required non-linearity. This leads to either a reduced effect, no effect or even an effect in the opposite sense to the R–M effect, as it is presently understood (which applies only when $[B_Z]_{\text{GSEQ}}$ is small). This means that, because of the increased role of non-zero $[B_Z]_{\text{GSEQ}}$, the R–M effect on the semi-annual variation should be weaker or absent for the occurrence of larger events, the opposite of the behaviour that is observed (as shown in the original paper by Russell & McPherron, 1973 and, for example, by Paper 1). Hence Figures 1 and 2 present a considerable puzzle in terms of understanding the equinox peaks in the occurrence of large storms that are driven by IMF that deflected strongly southward by transient events such as CMEs and CIRs.

1.2 The timing of the peaks of the semi-annual variation

Large southward field in the GSEQ frame during large geomagnetic disturbances has another implication. As discussed in Paper 1, many studies attempt to use the precise timing of the equinox peaks in average geomagnetic activity levels, or in the occurrence of storms, as a potential discriminator of the various mechanisms (Russell & McPherron, 1973; Le Mouél et al., 2004). However, the random nature of events of large negative $[B_Z]_{\text{GSEQ}}$ hitting the Earth’s magnetosphere means that data from a great many years are needed before a systematic peak can be observed such that the precise timing of the peak can be properly assessed (Russell & McPherron, 1973).

1.3 The role of solar wind dynamic pressure

Another factor that the literature indicates that we should consider is solar wind dynamic pressure ($p_{\text{SW}} = m_{\text{SW}}N_{\text{SW}}V_{\text{SW}}^2$,

where m_{SW} is the mean ion mass, V_{SW} the number density and V_{SW} the speed of the solar wind). Caan et al. (1973) showed that the magnetic energy density in the near-Earth tail lobes was increased by both prior intervals of southward-pointing IMF (i.e., substorm growth phases) and by increased p_{SW} . Mid-latitude “range” indices (such as am) are strongly modulated by the auroral electrojet of the substorm current wedge and so have a strong correlation with indices such as AE , AL , SME and SML . Hence they are influenced by substorm expansion phases when the stored tail lobe energy is released (Adebesin, 2016; Lockwood et al., 2019a, 2019d, Appendix A of Paper 1). These mid-latitude range indices also have a strong dependence on V_{SW}^2 and hence on p_{SW} (Lockwood, 2013; Lockwood et al., 2014). Using the standard deviation of geomagnetic variations, Finch et al. (2008) found that the nightside auroral electrojet was the source both of the equinoctial $F-UT$ pattern and of the V_{SW}^2 dependence. Lockwood (2013) pointed out that this implies that p_{SW} influences the auroral electrojet and the equinoctial $F-UT$ pattern by constraining the near-Earth tail such that on appending open flux to the tail lobes of the magnetosphere (during periods of southward IMF) the lobe field (and hence the stored energy density and magnetic shear across the near-Earth cross-tail current sheet) increases by a greater factor if p_{SW} is large. This does not happen further down the tail where the magnetopause boundary becomes aligned with the solar wind flow: here the magnetic field, the energy density and the cross-tail current, are all set by the static pressure in interplanetary space with no influence of p_{SW} . At these large negative X_{GSE} , adding open flux just causes the tail to flare in cross-sectional area and the field in the lobes and the magnetic shear across (and hence total current in) the cross-tail current all remain constant for a given solar wind static pressure.

An important effect of p_{SW} was demonstrated directly by Karlsson et al. (2000) who showed that near-Earth tail energy content was reduced if p_{SW} decreased and that such sudden decreases caused quenching of any substorm expansion that had recently begun. Conversely, increases in p_{SW} have been seen to trigger onsets of full substorm expansion phases (Schieldge & Siscoe, 1970; Kokubun et al., 1977; Yue et al., 2010). Various studies suggest that increased p_{SW} enhances general magnetospheric convection and field-aligned current systems as well as geomagnetic activity (e.g., Lukianova, 2003; Lee et al., 2004; Palmroth et al., 2004; Boudouridis et al., 2005; Stauning & Troshichev, 2008): this is beyond and separate to the known generation of transient filamentary field aligned currents and travelling convection vortices by the boundary deformation (e.g., Lühr et al., 1996). Some of these observations are interpreted as being the result of enhanced magnetopause reconnection; however, in many cases the response delay appears to be too long for this to be the explanation.

1.4 The $F-UT$ response of the am index and the $a\sigma$ indices

For studies of the $F-UT$ pattern of geomagnetic activity, the am index (Mayaud, 1980) is by far the best geomagnetic index to employ because it is based on data from longitudinal rings of magnetometers in both hemispheres that are as uniform as possible (and deploys weighting functions to reduce the effects of necessary non-uniformity of the rings): this gives the am index an exceptionally uniform $F-UT$ response pattern, especially at

higher levels of geomagnetic activity, as demonstrated by the modelling of the index response by Lockwood et al. (2019d). As in Paper 1, we also make use of the $a\sigma$ indices (Chambodut et al., 2013) which are based on the same data as the am index but restrict the data used to stations that are within 6-h magnetic local time (MLT) sectors around dawn (03–09 h MLT, giving $a\sigma_{\text{dawn}}$), noon (09–15 h MLT, giving $a\sigma_{\text{noon}}$), dusk (15–21 h MLT, giving $a\sigma_{\text{dusk}}$), and midnight (21–24 and 00–03 h MLT, giving $a\sigma_{\text{midnight}}$).

1.5 The aims of the present paper

The main aim of the present paper is to establish some observed behaviours of the semi-annual variation. We start with an initial look in Section 2 at the relationship between annual and semi-annual variations of magnetospheric flux transport (convection) and geomagnetic activity. This is an initial and interim study of a limited dataset but still reveals some important behaviours. In Section 3 we investigate the geomagnetic response to power input into the magnetosphere, including an analysis of response delays as a function of activity level and time of year, F . In Section 4, we study annual variations in the geomagnetic response to events of large power input to the magnetosphere and to average power input, both with and without the separation by the polarity of the prevailing IMF $[B]_{\text{GSEQ}}$ component that enables us to identify the R–M effect. We study variations with the solar wind dynamic pressure p_{SW} in Section 5. However, we do not isolate the effects of solar wind mean ion mass m_{SW} number density, N_{SW} , nor speed, V_{SW} , independently and we note that dependencies of p_{SW} detected could arise from a dependence on different combinations of the parameters, potentially leading to different interpretations. The literature described in Section 1.3 strongly suggests that dynamic pressure, as a physical entity, plays a role in magnetospheric responses by squeezing the near-Earth tail; however, the discussion of such effects will be in a later paper that uses magnetopause and magnetospheric models to discuss the mechanisms in the light of the empirical results presented here.

2 Initial survey of semi-annual variations in power input into the magnetosphere and its response in geomagnetic activity and magnetospheric flux circulation

In this section, we make use of a database of 20,430 polar cap traversals made by DMSP satellites during 2001 and 2002, analysed using the procedure of Lockwood et al. (2009). We use only passes that cross the dawnside convection reversal boundary at 02–10 MLT and the duskside convection reversal boundary at 14–22 MLT and most of the data come from the DMSP-F13 satellite that was in a suitable orbit. Figure 3 shows the semi-annual variations in various parameters in fully simultaneous data: in each data sequence, a data gap in any one parameter is introduced into all other data sequences and each case, the data have been averaged into 365 equal-sized bins of time-of-year F (i.e., of one-day duration for the non-leap years used). This yields between 48 and 63 samples in each 1-day bin, with an average of just under 56. A running, boxcar

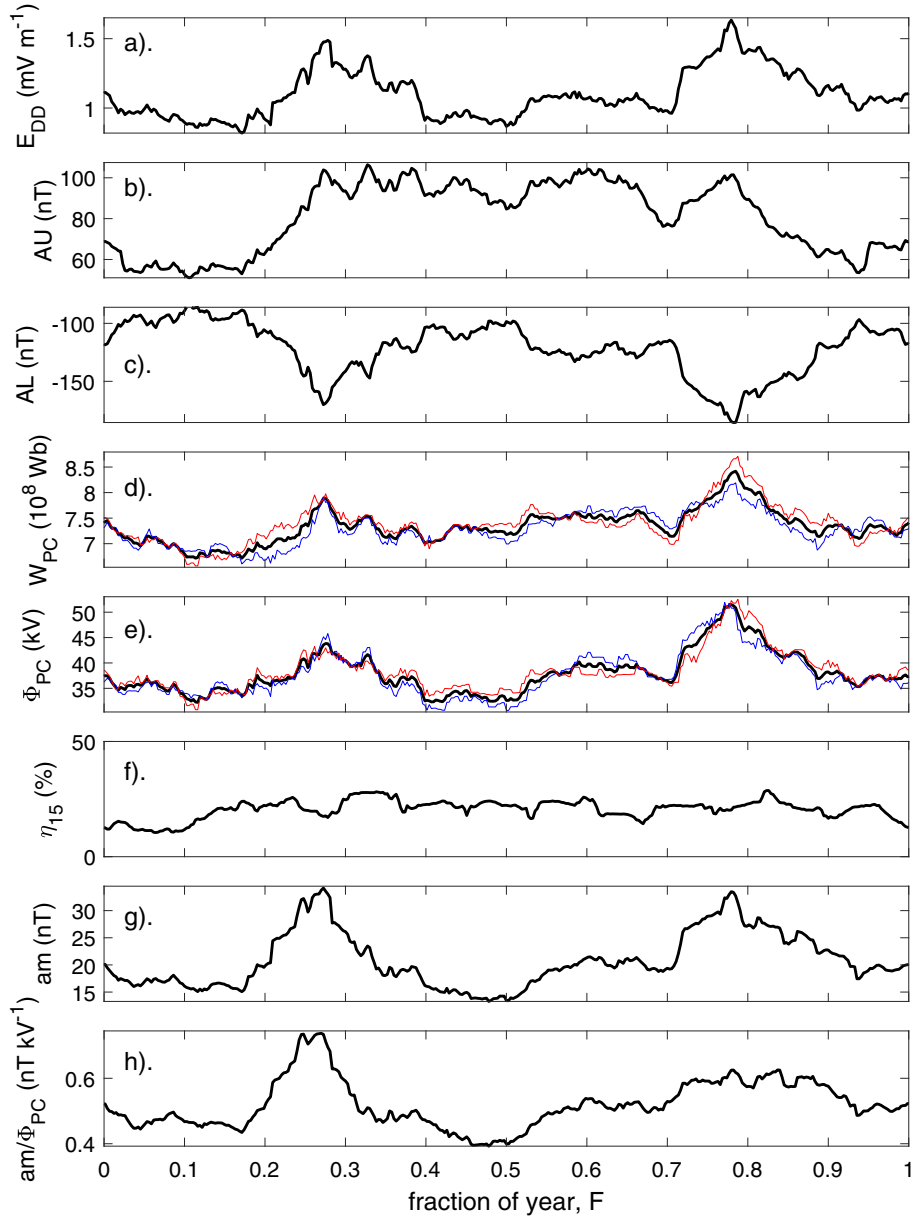


Fig. 3. Simultaneous data from the years 2001 and 2002. In each case the data have been averaged into 365 equal-sized bins of time-of year F (one day long for these non-leap years) and then a running mean taken over 27 bins to cover whole solar rotation intervals. From top to bottom: (a) the half-wave rectified dawn-to-dusk electric field, E_{DD} , in interplanetary space; (b) the AU index; (c) the AL index; (d) the polar cap flux, W_{PC} , from the DMSP satellite data; (e) the transpolar voltage, Φ_{PC} , from the DMSP satellite data; (f) the reconnection efficiency assuming that the cross-sectional radius of the magnetosphere is $15 R_E$ (where a mean Earth radius $1 R_E = 6370$ km), η_{15} ; (g) the am geomagnetic index; and (h) the ratio of the am index to the transpolar voltage, am/Φ_{PC} . In panels (d) and (e) for W_{PC} and Φ_{PC} , the red and blue lines are for the northern and southern polar caps, respectively.

mean was the taken over 27 bins to cover whole solar rotation intervals and give an even mix on the two polarities of the Y -component of the IMF. The dawn-to-dusk component, (E_{DD} , in the $+Y$ GSM direction) of the electric field in interplanetary space ($E_{SW} = -\vec{V}_{SW} \times \vec{B}_{IMF}$), is shown in Figure 3a. This has been half-wave rectified such that all negative (i.e., dusk-to-dawn) E_{DD} values are put to zero. Given that Figure 3 shows averages over 27-day intervals, we should expect steady-state to apply in which case, by Faraday's law, the electric field

would be curl-free and map from interplanetary space into the ionosphere down the open polar cap field lines. The AU index (Fig. 3b) shows only a strong annual variation due to the day-side conductivity enhancement in summer, which is also present in AL (Fig. 3c) but to a much lesser extent and the semi-annual variation can be seen. The polar cap flux, W_{PC} (Fig. 3d) and dawn-dusk transpolar voltage Φ_{PC} (Fig. 3e) are derived from the convection reversal boundaries detected by the DMSP satellites using the procedure described by Lockwood et al. (2009);

in both cases the black line is for all passes and the red and blue lines are for northern and southern polar cap passes, respectively. The procedure applies a statistically-derived correction to the observed difference in potential between the dawnside and duskside convection reversal boundaries to normalise to the value Φ_{PC} for an ideal 06–18 MLT orbit. Note that Φ_{PC} is often referred to as the “cross-cap potential” but is, in reality, a potential difference and hence a voltage: we here use the term “transpolar voltage”. Note also that, by Faraday’s law, a voltage is physically identical to a magnetic flux transfer rate. The statistical model of Lockwood et al. (2009) also gives the variable polar cap shape which is used with the observed polar cap diameter to generate estimates of the polar cap flux, W_{PC} . All three lines (for northern- and southern-hemisphere data separately and all data) are similar in Figure 3d, as indeed they should be given that by Maxwell’s equation $\nabla \cdot \vec{B} = 0$, the total open flux in the two hemispheres is always identical. The small difference between the independent values for the two hemispheres gives strong support to the method used to compute W_{PC} . In addition, for these 27-day averaging intervals, the total rate of flux transfer across the polar caps (the transpolar voltages) should also be very similar, as they are seen to be in Figure 3e. (On shorter timescales non-steady-state effects can become apparent and the flux transfer rate across the central dawn-dusk diameters of the two polar caps does not have to be the same at any one instant). Because of the long averaging timescale, the reconnection efficiency can be taken to be the ratio of the voltages across the polar cap and the whole magnetosphere, $\eta_{15} = \Phi_{PC}/(2E_{DD} R^*)$ and in Figure 3f is computed assuming that the cross-sectional radius of the magnetosphere is constant at $R^* = 15 R_E$ (where a mean Earth radius $1 R_E = 6370$ km). The value of η_{15} derived is relatively constant over the year and does not show a semi-annual variation. Figure 3g shows the corresponding values of the am index (linearly interpolated from the 3-hourly data to the central time of each polar cap pass). The bottom panel (Fig. 3h) plots the ratio am/Φ_{PC} and shows that the semi-annual variation in am is amplified compared to that in magnetospheric convection. Figure 3 shows that the average semi-annual variations in E_{DD} , Φ_{PC} , W_{PC} , $-AL$, and am are all very similar in waveform.

Figure 4 demonstrates that the amplification of the semi-annual variation in am , relative to Φ_{PC} , is a general feature of the am index by plotting daily means of am as a function of daily means of Φ_{PC} . Note that during each day there are typically 25 polar cap satellite passes and there are 8 am measurements that are linearly interpolated to the central times of the passes. The error bars give the standard errors in these daily means. The mauve line is the best-fit 3rd-order polynomial and the grey area is the 2- σ uncertainty band in that fit. Appendix details the ensemble fitting procedure used and gives the polynomials for the best fit and its 2-sigma uncertainty limits. Appendix also gives the corresponding fits for Φ_{PC} as a function of am , which could be useful for studies of magnetospheric flux transfer (i.e., convection) that wish to make use of the geomagnetic activity data. The coefficients for the Φ_{PC}^3 and am^3 terms in the polynomial fits (for am and Φ_{PC} , respectively) are very small and the fitted variations are very close to being quadratic in form. It can be seen that the average am increases monotonically with average Φ_{PC} , but not linearly and this is consistent with the amplification of the semi-annual variation in am relative to that in Φ_{PC} . Note that Figure 5 of Lockwood et al. (2019a) shows that

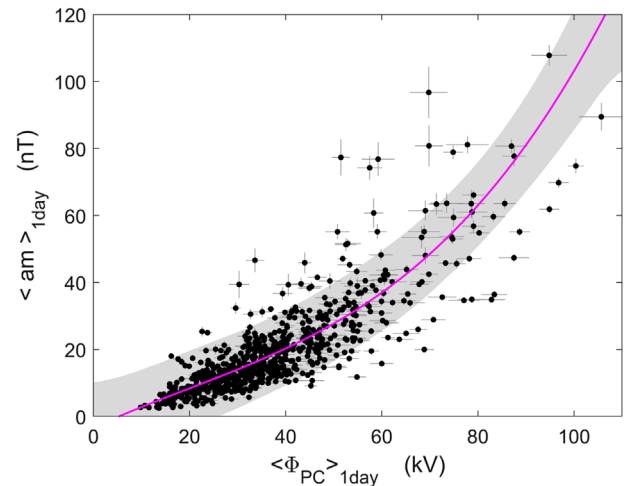


Fig. 4. Scatter plot of daily means of the am index as a function of the corresponding daily mean transpolar voltage, Φ_{PC} , as determined for 2001–2002 by DMSP satellites (principally F13) and normalised for the satellite track to an ideal 06–18 MLT path using the procedure of Lockwood et al. (2009). The error bars are plus and minus one standard error in the means. The mauve line is the best-fit 3rd order polynomial fit and the grey area is bounded by the 2-sigma uncertainty level in that fit. The fitting procedure is given in Appendix to this paper, along with polynomial expressions for the best fit and the uncertainty band edges. These can be used to estimate the am level associated with a given Φ_{PC} : Appendix also gives the corresponding 3rd order polynomials that allow computation of the Φ_{PC} value associated with a given am value.

daily means of the power input into the magnetosphere, P_z , estimated from interplanetary measurements, have a linear relationship with daily means of the am index. If we assume that steady state applies to averages taken over one day, the magnetospheric power input, P_z would be equal to the total daily power deposited in the magnetosphere–ionosphere–thermosphere system. This averaging timescale would cover several substorm cycles so should largely smooth these cycles out, which are the dominant oscillation of the storage/release magnetospheric system; however, we note that large storms often last longer than a day and so we should expect this relation to break down during such events. Hence together, Figure 5 of Lockwood et al. (2019a) and Figure 4 of the current paper strongly suggest that the total power deposited has an approximately Φ_{PC}^2 dependence on transpolar voltage.

Figure 5 presents time-of-year/time-of-day (F – UT) plots for transpolar voltage Φ_{PC} and polar cap flux W_{PC} for this dataset. Data are sorted into 24 equal-width bins in F and 16 equal-width bins of UT using the time of the centre of the polar cap crossing. The data are then smoothed with a 1–3–1 triangular-weighting filter, applied in both the F and UT dimensions. The top panels are for passes of the northern polar cap, the lower panels are for passes of the southern polar cap. Figures 5d and 5h show that the number of samples in each F – UT bin, n_{bin} , are high and relatively constant varying between 26 and 30. The transpolar voltage Φ_{PC} (Figs. 5a and 5e) and, to a lesser extent polar cap flux, W_{PC} (Figs. 5b and 5f) show the semi-annual variation but no hint of any equinoctial pattern. However, we cannot draw any firm conclusion from this

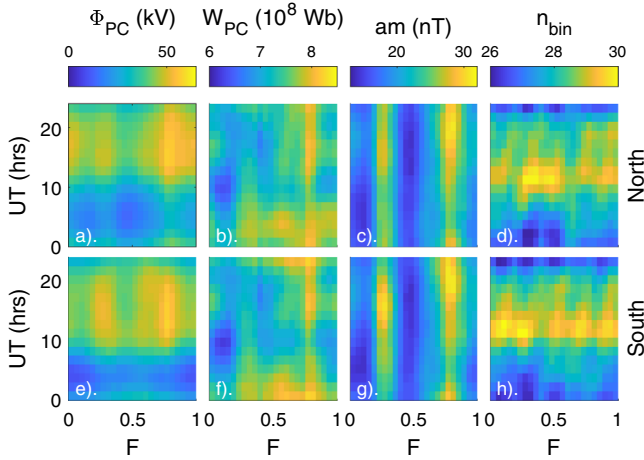


Fig. 5. Time-of-year/time-of-day (F – UT) plots for transpolar voltage and polar cap flux for 2001–2002, inclusive from the DMSP satellites. Data are sorted into 24 equal-width bins in F and 16 equal width bins of UT using the central time of the polar cap traversal. The top panels (a–d) are for passes of the northern polar cap, the lower panels (e–h) are for passes of the southern polar cap. (a and e) Show the transpolar voltage Φ_{PC} ; (b and f) show the polar cap flux, W_{PC} ; (c and g) show the simultaneous am index value (linearly interpolated from the three-hourly values to the time of the centre of the polar cap crossing) and (e and h) shows the number of data points, n_{bin} in each F – UT bin.

because neither does the am index for simultaneous data (Figs. 5c and 5g). In contrast, Paper 1 demonstrated that the equinoctial pattern is clearly present in larger am datasets. This will be revisited in a later paper that deploys a much longer database of transpolar voltage observations.

The F – UT plots for Φ_{PC} may not show an equinoctial variation, but they do show a fascinating UT variation with a major minimum at 0–10 UT at all times of year. Figure 5 shows this is seen in both hemispheres and it is also found in both of the two years when analysed in isolation (not shown). Paper 1 showed that in this UT band there is a persistent, but smaller, drop in geomagnetic indices and, notably, am with its highly uniform F – UT response. There is also an interesting UT variation in the polar cap flux seen in both polar caps, with W_{PC} almost in antiphase with Φ_{PC} . This behaviour is seen at all times of year except early in the year ($F \approx 0.2$). Again this is seen in both polar caps and in the data from both years when analysed separately.

For the expanding-contracting polar cap model of ionospheric convection excitation (Cowley & Lockwood, 1992), the transpolar voltage measured by a satellite that passes through the centre of the convection polar cap, in the approximation that the polar cap remains circular in shape, is given by (Lockwood, 1991):

$$\Phi_{PC} \approx (\Phi_D + \Phi_N)/2 \quad (1)$$

where Φ_D is the voltage along the reconnection X -line (or X -lines) in the dayside magnetopause where open flux is generated and Φ_N is the voltage along the reconnection X -line (or X -lines) in the cross-tail current sheet where open flux is

destroyed. We can apply equation (1) because the Φ_{PC} data have been normalised to be along the 06–18 MLT line by using the procedure of Lockwood et al. (2009). By Faraday’s law, applied to the open-closed field line boundary, the rate of change of open flux in the polar cap flux (W_O) is

$$dW_O/dt = \Phi_D - \Phi_N \approx dW_{PC}/dt. \quad (2)$$

Equation (2) is effectively a continuity equation for the open flux, W_O . The equality with the rate of change of W_{PC} is only approximate because the polar cap flux determined from the spacecraft data is the flux inside the convection polar cap, which is generally greater than the open flux W_O ; however the difference is generally small and the rate of change of the difference even smaller. By equation (2), the rise in W_{PC} ($dW_{PC}/dt > 0$) seen at about 22–05 UT implies either that Φ_D has increased or that Φ_N has decreased, but the former would, by equation (1), cause a rise in Φ_{PC} whereas the latter would cause a fall. Hence the combined behaviour of a fall in Φ_{PC} and a rise in W_{PC} is qualitatively consistent with a fall in Φ_N at around 22–05 UT . Figure 5 shows that the rise in W_{PC} does lead the minimum in Φ_{PC} by 2–3 h. This could potentially be explained by the initial motions in the ionospheric footprints of the reconnection lines and the consequent inductive decoupling of the voltages appearing along the X -lines and their ionospheric footprints, the “merging gaps”. This means that ionospheric flows (and hence voltages) are not established straight away as the open/closed boundary moves (Morley & Lockwood, 2006; Lockwood et al., 2006). However, the rates of change in dW_{PC}/dt correspond to voltage differences of between about 5 and 10 kV only, whereas the drop in Φ_{PC} is of order 25 kV so quantitatively the two are not in such good agreement with a common cause of a drop in Φ_N . This may arise from the limitations in the method used to derive W_{PC} or may point to another factor contributing to the observed minimum in Φ_{PC} at 0–10 UT . There is a systematic variation with UT of the orbit path of the main spacecraft employed (DMSP-F13) and that may have contributed to the 0–10 UT minimum in Φ_{PC} . In theory, this should have been corrected for by the procedure of Lockwood et al. (2009) that normalises Φ_{PC} measured for the actual orbit path to an ideal 06–18 MLT pass: however, if the correction is too small it could give an overestimation of the depth of the 0–10 UT minimum in Φ_{PC} .

To summarise this section, we have presented an initial, limited study of the semi-annual variation in transpolar voltage and flux transfer. We find there is a clear semi-annual variation in transpolar voltage that mirrors the waveform of that in geomagnetic activity closely but it is not as large in amplitude. This is consistent with the latter showing a non-linear (quadratic) variation with transpolar voltage. We find that during the persistent minimum of the UT variation in geomagnetic activity defined in Paper 1 there is a persistent decrease in transpolar voltage which may be, at least in part, consistent with a decrease in reconnection voltage in the cross-tail current sheet. Confirmation of these findings using a larger dataset of transpolar voltage measurements will be presented in a later paper in this series, but the great consistency with which we find the features described (in both polar caps and in each of the three years studied here) leads us to conclude they are probably real phenomena.

3 The geomagnetic response to power input to the magnetosphere

3.1 Estimation and distributions of power input

As in Paper 1, we use the power input to the magnetosphere, P_{α} , computed from interplanetary measurements using the Vasyliunas et al. (1982) theoretical formulation. To remove some constants in the formulation we divide by the overall mean for the interval studied which is 1995–2017, $P_o = \langle P_{\alpha} \rangle_{\text{all}}$. The correlations between P_{α}/P_o and the am index were studied for the near continuous data after 1995 and are very high, being 0.978 for annual means, 0.932 for means over Carrington rotation intervals (≈ 27 days), 0.908 for daily means, and 0.842 for 3-hourly means (Lockwood, 2019).

Figure 6 shows the cumulative distribution functions (c.d.f.s) of P_{α}/P_o . The P_{α}/P_o data are divided into 288 bins, 36 equal-sized bins in fraction of year F and the same eight 3-h Universal Time (UT) bins over which the range am index is evaluated. For each F – UT bin the c.d.f. of P_{α}/P_o is coloured according to the mean value for that bin, $\langle P_{\alpha}/P_o \rangle_{F,UT}$. Figure 6 corresponds to the plot for am presented in Figure 8b of Paper 1, covering the same interval (1995–2017), so these two families of c.d.f.s can be directly compared and are found to be very similar. The origin of the distributions (which are log-normal in form) has been explained by Lockwood et al. (2019b, 2019c) and arises from the effect of averaging timescale on the distribution of the IMF orientation factor $\sin^4(\theta/2)$ factor at high (1 min) time resolution, where θ is the IMF clock angle. It should be stressed here that the 4th power exponent in this $\sin^4(\theta/2)$ factor is not a free fit parameter but arises from the analysis proposed Vasyliunas et al. (1982). As discussed in the introduction to this paper and in Paper 1 (Appendix B), the IMF orientation factor is critical to the analysis of the semi-annual variation presented here because it gives rise to the R–M effect. Lockwood et al. (2019b) and Lockwood (2019) have shown that this $\sin^4(\theta/2)$ factor performs better than all suggested alternatives, including the “half-wave rectified” southward field which was the basis of the original R–M theory (Russell & McPherron, 1973). The $\sin^4(\theta/2)$ factor preserves the non-linearity in the geomagnetic response which results in the R–M effect giving the semi-annual variation, but avoids the discontinuity in slope at $[B_z]_{\text{GSM}} = 0$ ($\theta = \pi/2$). The formulation also allows for a continued, lower rate of magnetopause reconnection opening field lines, even when the IMF is northward, as has been deduced in a number of studies, including observations of ionospheric O^+ ions escaping the magnetosphere on open field lines (Chandler et al., 1999). However, note that although the $\sin^4(\theta/2)$ factor is used here and other studies have found it to be optimum, other forms for the IMF orientation factor will generate the R–M effect and the results may vary in detail, but not in the basic principle.

We use 3-hourly means of the power input P_{α}/P_o to compare with the 3-hourly values of the am index, even though the latter are not mean values over the 3 h, being based on the range (maximum minus minimum) of variation within the 3-h interval, as seen at the various magnetometer stations employed by the index. Because over fixed 3-h intervals the mean value of P_{α}/P_o is proportional to the integrated value, this is consistent with the storage/release concept of magnetospheric behaviour, whereby integrated energy input into the magnetosphere is stored in the geomagnetic tail and released to give

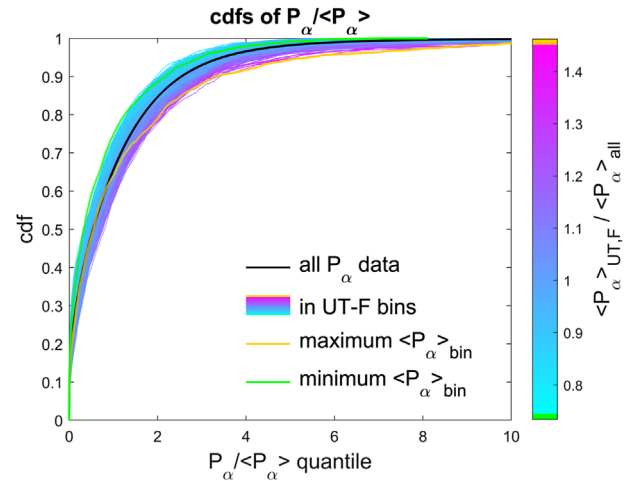


Fig. 6. Cumulative probability distributions (c.d.f.s) of the power input to the magnetosphere, P_{α} , as a ratio of its mean value $P_o = \langle P_{\alpha} \rangle_{\text{all}}$ for the full interval of near-continuous interplanetary data (1995–2017, inclusive). The P_{α}/P_o data are divided into 288 bins: 36 equal-sized bins in fraction of year F and the same eight 3-h Universal Time (UT) bins over which the range am index is evaluated. For each F – UT bin the c.d.f. of P_{α}/P_o as a ratio of the mean value for that bin $\langle P_{\alpha}/P_o \rangle_{F,UT}$ was plotted and colored according to the value of that ratio. The black line is for all P_{α}/P_o data, the orange line for the F – UT bin giving the largest $\langle P_{\alpha}/P_o \rangle_{F,UT}$ and the green line for the F – UT bin giving the smallest $\langle P_{\alpha}/P_o \rangle_{F,UT}$.

bursts of geomagnetic activity that set the range values detected by each the am magnetometers. There is an issue as to what is the most appropriate response lag between the 3-hourly power input means and the geomagnetic response and that is analysed in Section 3.3 below. Confirmation that it is appropriate to compare 3-hourly means with three-hourly geomagnetic range values (such as am) is provided by Appendix A of Paper 1 which compares the am index data with both the averages of the auroral electrojet AE and $-AL$ indices and with their maxima over the 3 h intervals and finds equally good correlations.

Figure 7 stresses the excellent correlations between am and P_{α}/P_o for large averaging timescales, τ , but also shows there is structure in the scatter. Part (a) is for annual means ($\tau = 1$ year). The black squares are for all data, to which the green line is the best linear regression fit. The coloured squares are for the data separated into the 8 UT ranges over which the am index is computed, the squares are coloured according to the centre value of those UT ranges using the scale given at the top of the panel. There is a persistent pattern with a fixed P_{α}/P_o value giving the lowest am for the 00–06 UT data and the highest am for the 21–24 UT data. This is consistent with the UT variation discussed in Paper 1 and in Section 2 above. Figure 7b shows the scatter plot for $\tau = 10$ days. The points are here colour-coded by separation in time from the closest equinox of the centre of the 10-day averaging interval, Δt_{eq} . There is again a consistent pattern with a fixed P_{α}/P_o value giving the lowest am around the solstices (which are at $\Delta t_{\text{eq}} = 0.25$) and highest am at the equinoxes (at which $\Delta t_{\text{eq}} = 0$). The green line is the least-squares regression line for all data and is very similar to that for annual data shown in Figure 7a, and the orange and black lines are the linear regression fits to all data taken in intervals of length

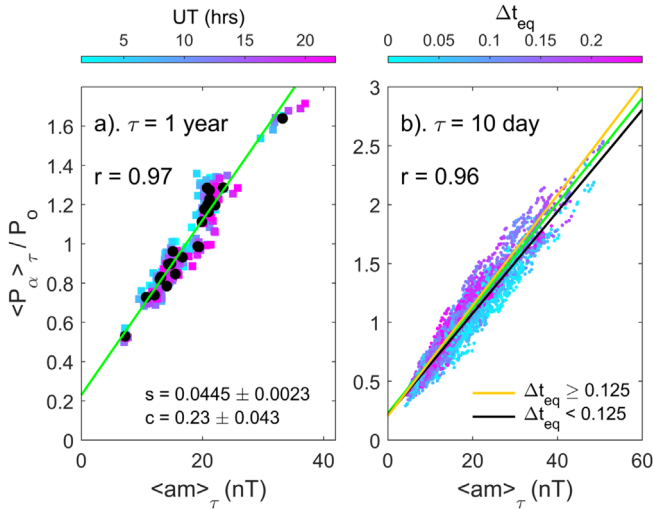


Fig. 7. The relationship of am and normalized power input to the magnetosphere P_{α}/P_o for large averaging timescales τ : (a) $\tau = 1$ year and (b) $\tau = 10$ days. In (a) the black circles are for all data, for which the linear correlation coefficient is $r = 0.97$ and the best fit OLS (Ordinary Least-Squares) linear regression, shown by the green line, is $\langle P_{\alpha}/P_o \rangle = s \cdot am + c$. Averages for the 8 UTs of the am index are shown by the squares, colored by the scale shown at the top of the figure: it can be seen that am is persistently a little smaller than the average response at 0–9 UT and persistently a little larger at 15–4 UT. In (b) the points are colored by the separation of time-of-year F from the value at the closest equinox, Δt_{eq} . The linear correlation for all data is $r = 0.96$ and the best fit linear regression is again the green line. The am response at low Δt_{eq} (around the equinoxes) is persistently greater than at high Δt_{eq} (around the solstices) showing that there is a contribution to the semi-annual variation in am is not associated with that in $\langle P_{\alpha}/P_o \rangle$ and hence not directly attributable to the R–M effect on solar wind–magnetosphere coupling. The black and orange lines are, respectively, the best-fit linear regressions for around the equinoxes ($\Delta t_{\text{eq}} \leq 0.125$) and around the solstices ($\Delta t_{\text{eq}} > 0.125$). The ordinary least squares (OLS) linear regression coefficients and errors are given in Table 1.

0.25 yr around the solstice and equinoxes. The best-fit coefficients and their 2-sigma errors for the ordinary least squares (OLS) linear regression are given in Table 1. The slopes of the fit for the equinox data is significant smaller than for the solstices (difference equal to $-3.7 \times 10^{-3} \pm 0.3 \times 10^{-3}$) so it takes a lower P_{α}/P_o to generate a given am value at the equinox. This demonstrates that there is a significant difference between the solstices and equinoxes in the geomagnetic response to a given power input P_{α}/P_o . From the linear regression coefficients for the 6-month intervals around the equinoxes and solstices used in Table 1, this amplification of the equinox am value over the solstice am value for a given P_{α}/P_o is by a factor of 1.085. However, this figure is obtained by dividing all data in the year into either solstice and equinox and will greatly underestimate the amplitude of the semi-annual variations seen in higher time-resolution data. This was investigated in Paper 1, using 36 equal-width bins of time-of-year, F (each just over 10 days long) and for am the semi-annual variation amplification factor was found to be about 2 at this 10-day time resolution. The important point about Figure 7b and Table 1 is that it

establishes that the ratio am/P_{α} varies with time of year and is statistically higher at the equinoxes than at the solstices. Similarly Figure 7a shows that am/P_{α} is reduced at 00–06 UT. This means that at least some of both the semi-annual variation and the UT variation arises not from the solar wind–magnetosphere energy input but the response of the magnetosphere–ionosphere–thermosphere system to that energy input.

3.2 Amplification of the semi-annual variation and the equinoctial F –UT pattern

Paper 1 used the four $a\sigma$ indices, compiled by Chambodut et al. (2013) from stations in four 6-h magnetic local time (MLT) intervals around 06, 12, 18 and 24 MLT, to show that all display a semi-annual variation and an equinoctial F –UT pattern. It is interesting to note how the index compilation has influenced behavior. The $a\sigma$ indices are based on the range (between maximum and minimum) of the horizontal field component detected in a 3-h intervals and are all, like the am index, dominated by substorm expansion phases and sawtooth events; in other words, by the unloading part of the storage–release magnetospheric response.

In Paper 1 it was shown that the variation of $a\sigma_{\text{midnight}}/\langle a\sigma_{\text{midnight}} \rangle$ over the year is 0.317 ± 0.040 whereas for P_{α}/P_o the corresponding amplitude is 0.136 ± 0.035 . Thus the semi-annual variation in the $a\sigma_{\text{midnight}}$ index is significantly amplified compared to that in power input to the magnetosphere and the best estimate of the factor is $0.317/0.136 \approx 2.33$. The $a\sigma_{\text{midnight}}$ index shows the strongest semi-annual variation, $a\sigma_{\text{dawn}}$ and $a\sigma_{\text{dusk}}$ show similar amplitude variations to am and $a\sigma_{\text{noon}}$ shows the weakest (with no significant amplification over P_{α}/P_o). For both $a\sigma_{\text{dawn}}$ and $a\sigma_{\text{dusk}}$ the best estimate of the amplification factor is 2.01, for $a\sigma_{\text{noon}}$ it is 1.08, and for the am index it is 2.08. Hence all the am and $a\sigma$ indices, apart from $a\sigma_{\text{noon}}$, show amplification of the semi-annual variation in input power into the magnetosphere and this, as for the equinoctial F –UT patterns reported by Chambodut et al. (2013) is almost non-existent at noon and strongest at midnight. The studies of McPherron et al. (2013) and Chu et al. (2015) using the AL auroral electrojet AL index and a mid-latitude nightside “bay” index find that the R–M effect on solar wind/magnetosphere coupling is about 40% of the geomagnetic response which yields an amplification factor of 2.5, in good agreement with the amplification factor found here for $a\sigma_{\text{midnight}}$.

3.3 Response lag of the am index to power input

In order to study shorter averaging timescales than the approximately 10-day intervals used in Figure 7, we evaluate the correlation between P_{α}/P_o and the am index as a function of F , UT and activity level, allowing for an optimum response lag of am , dt_o . To do this, we make 1-min values of P_{α}/P_o using the procedure of Lockwood et al. (2019a). This employs 1-min interplanetary observations for 1995–2017 (inclusive), downloaded from the Omni database which is compiled and maintained by the Space Physics Data Facility at NASA’s Goddard Space Flight Center. These Omni interplanetary data have been lagged so that the timings apply to the conditions arriving at the nose of Earth’s bow shock. One-minute mean ion mass data is taken from the highest resolution available (which is often hourly) using Piecewise Cubic Hermite

Table 1. Coefficients and their 2-sigma errors for the ordinary least squares (OLS) linear regression fits shown in Figure 4, for 10-day means of P_{α}/P_o and am , where $P_{\alpha}/(P_o)_{\text{fit}} = s \cdot am + c$.

Data	Line colour line in Figure 4	Slope, s	Error in s , ξ_s	Intercept, c	Error in c , ξ_c
All	Green	0.0445	± 0.0023	0.2299	± 0.0431
Equinox, $\Delta t_{\text{eq}} < 0.125$	Black	0.0432	± 0.0003	0.2128	± 0.0051
Solstice, $\Delta t_{\text{eq}} \geq 0.125$	Orange	0.0469	± 0.0002	0.2053	± 0.0043
Difference (equinox-solstice)	–	–0.0037	± 0.0003	0.0075	± 0.0067

Interpolating Polynomial (PCHIP) interpolation. This interpolation procedure was tested using available 64-s observations of the solar wind mean ion mass from the Advanced Composition Explorer (ACE) which were averaged into hourly values to which the same procedure was then applied. It was found the distribution of differences was Gaussian with mode and mean value at essentially zero and a standard deviation that was 2.5% of the overall average of the mean ion mass. We employ the optimum coupling exponent α of 0.44 found by Lockwood et al., (2019b). These 1-min P_{α}/P_o values are then combined into hourly means, rejecting values where the predicted error in P_{α}/P_o due to data gaps exceeds 5%, using the criterion established by Lockwood et al. (2019a) from the introduction of synthetic data gaps. Note that interpolation, such as used above to obtain 1-min mean ion mass values, cannot be used to fill data gaps in the P_{α}/P_o sequence because of the much greater variability introduced the IMF orientation factor A_{θ} (Lockwood et al., 2019b, 2019c). These hourly values are then averaged into 3-hourly values, keeping data only when all three 1-h values are available. This procedure was repeated many times to generate 3-hourly values centred on time $t_{\text{am}} - dt$, where t_{am} are the times of the centres of the three-hourly intervals over which am is computed and the response lag dt was varied between -10 min and $+300$ min in steps of 1 min.

All 310 of the series of three-hourly P_{α}/P_o data obtained this way were then subdivided into the 288 $F-UT$ bins used in Figure 3. The total number of am data points in the interval (1 January 1995–1 September 2019) is 75,008 and dividing into 288 $F-UT$ bins gives an average of 260.4 $F-UT$ samples per bin. To make the lag correlations we use one day of data (i.e., eight values around each $F-UT$ sample at times -9 h, -6 h, -3 h, 0 , $+3$ h, $+6$ h, $+9$ h and $+12$ h relative to the UT of the bin) giving an average of 2083.3 observations per bin for all the am data. The data were then further subdivided into nine quantile ranges of geomagnetic activity, as quantified by am . We use the notation that, for example, the 50% quantile of am (i.e., the median) is $q(0.5)$. The quantile ranges used are: $q(0) < am < q(1)$ (i.e., all data, the red points in Fig. 8 for which there are 2083.3 samples in each correlation analysis); five non-overlapping bands each containing 20% of the data (i.e., an average of 416.7 am samples in each correlation analysis), $q(0) < am < q(0.2)$ (orange points), $q(0.2) < am < q(0.4)$ (pink points), $q(0.4) < am < q(0.6)$ (light green points), $q(0.6) < am < q(0.8)$ (cyan points), and $q(0.8) < am < q(1)$ (dark green points). We also study and the largest 10% of am values $q(0.9) < am < q(1)$ (blue points, each based on 208.3 samples on average), the largest 5% $q(0.95) < am < q(1)$ (the mauve points, each based on 104.2 samples on average) and $q(0.99) < am < q(1)$ (the black points, each based on just 20.8 samples on average). In fact some data sub-divisions had fewer data points to correlate than this because

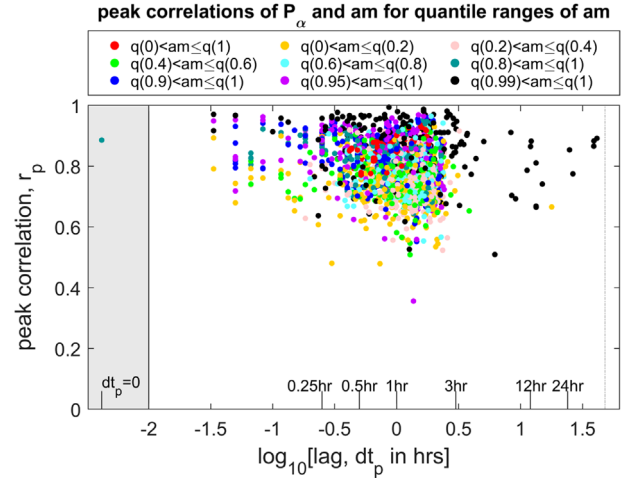


Fig. 8. Peak correlation r_p between am and 3-hourly means of P_{α}/P_o as a function of the logarithm of the lag dt_p giving that peak correlation, for data from 1995–2017, inclusive. One-minute P_{α}/P_o data were averaged into hourly and then 3-hourly intervals, centred on the mid-points of the am data intervals, minus a response lag dt that was varied between -10 min and 5 h in steps of one minute. At each dt the correlation between $P_{\alpha}(t - dt)/P_o$ and $am(t)$ is evaluated for each of the data subsets studied. The data are divided and colour-coded into 9 quantile ranges of am given by the legend. We use the notation that 20% of all the data have am values lower than $q(0.2)$. The red dots are for all data, $q(0) < am \leq q(1)$. Five of the quantile ranges each contain 20% of the data: $q(0) < am \leq q(0.2)$, $q(0.2) < am \leq q(0.4)$, $q(0.4) < am \leq q(0.6)$, $q(0.6) < am \leq q(0.8)$ and $q(0.8) < am \leq q(1)$. In addition, the plot studies the top 10%, 5% and 1% of all am values, respectively $q(0.9) < am \leq q(1)$, $q(0.95) < am \leq q(1)$, and $q(0.99) < am \leq q(1)$. Correlations are shown for $F-UT-m$ bins that have more than 16 samples and for which the correlation significance exceeds 95%.

of data gaps in the P_{α} data series. In each of these $288 \times 9 = 2592$ cases, a lag correlogram was generated and the peak correlation, r_p , and the lag giving it, dt_p , were determined. Figure 8 is a scatter plot of r_p against $\log_{10}(dt_p)$. Points are colour coded by the quantile range using the key given (as described above, the red points are for all data and the black point for the largest 1%). Points are plotted only where the number of data points exceeded 16 and the p -value of the null hypothesis (that the correlation was zero) was less than 0.05. As expected, the lowest correlations are for the lower-activity quantiles, the higher quantiles generally giving values that exceed the value of 0.842 that is obtained for all 3-hourly means. The values of dt_p are generally between 15 min and 2 h, although we note peak correlation is sometimes found at larger dt_p for the largest 1% of am

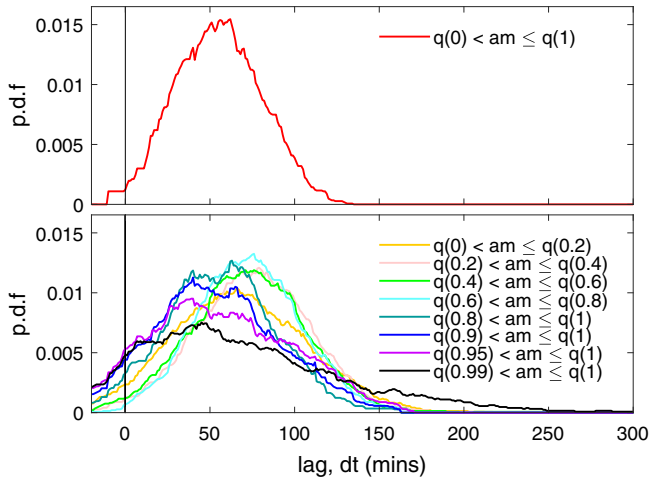


Fig. 9. Distribution of response lags for the 288 F – UT bins studied for the response of the am index to the power input to the magnetosphere P_{α}/P_o for 1995–2017, inclusive. (Top) The red line shows the distribution of the lags giving peak correlation dt_p between P_{α}/P_o and am for all the data. (Bottom) The same analysis but the am data have been further subdivided into the 8 other quantile ranges used in Figure 8. The distributions are taken in 1-min ranges and then smoothed with a 10-min running mean.

values – these are long duration storms where the activity level remains high for a day or longer. Note also that these values for the largest am are the least reliable because they are based on the smallest number of samples, although the p -values of points used always meet the 95% significance threshold. The Omni data have been lagged to the nose of the bow shock and so dt_p includes allowance for propagation time across the magnetosheath to the magnetopause, the time for open flux to be appended to the tail lobe and the growth phase accumulation of sufficient open flux in substorm growth phases to drive the onset of expansion phase activity and then a further delay as am rises to its peak response.

Figure 9 plots the distributions of 288 dt_p values (one for each of the F – UT bins) for various quantile ranges of am . The distributions are taken in 1-min ranges and then smoothed with a 10-min running mean. The upper panel shows the distribution for all values ($q(0) \leq am \leq q(1)$, the red points in Fig. 8) and the lower panel shows the distributions for the eight other quantile ranges, using the same colour scheme as for the points in Figure 8. It can be seen in the lower panel that for lower am the lag is somewhat longer (peaking around 75 min). For am values above $q(0.8)$ there are hints of two peaks to the distribution, one around 65 min, the other near 40 min and as am is further increased, the relative magnitude of these two peaks changes appears to change. It is not certain that there really are two peaks to these distributions, but the net effect of a decrease in the mode value at higher quantile levels is clear. For the largest 1% of am values there is a very broad distribution with a single peak near 45 min. The top (red) curve shows that the optimum single lag is $dt_o = 60$ min. As expected there are almost no values at negative lags and there are very few at lags below 10 min which would be quasi-instantaneous responses. These cases may be chance occurrences or could be the effects of a second pulse of reconnection, as modelled

for ionospheric convective flow by Morley & Lockwood (2006). We searched for a consistent pattern in F and UT in this distribution of dt_p lags but found none (the lack of variation with UT in particular being expected because values for a whole day were selected around each UT).

In summary, in this section we have studied the response of geomagnetic activity, as quantified by the am index, to power input into the magnetosphere. We find no consistent variation in the response delay with time-of-year, F , and the use of one-day intervals around nominal UT s (to keep sample numbers high and correlations significant) precluded the detection of any UT variation. The mode of the distribution consistently moves to slightly lower lags with increased activity levels and the width of the distribution increases. However, we note that the lower number of samples for the highest am values means that these results are the least reliable. Overall, a lag of 1 h is optimum for the whole dataset ($dt_o = 60$ min), but there is considerable spread with the 2-sigma points being near 10 and 100 min. For all studies in the remainder of this paper that compare the am index with any interplanetary parameters (for example power input into the magnetosphere, P_{α}/P_o , solar wind dynamic pressure, p_{sw} , or the IMF $[B_y]_{GSEQ}$ component) we make allowance for this mean lag by taking the interplanetary data $dt_o = 60$ min before the time of the am value (which is the mid-point of the 3-h interval over which the range and hence the am value is determined).

4 Year-to-year fluctuations in the semi-annual variations in power input to the magnetosphere and the geomagnetic response

As discussed in Paper 1 and in the introduction to the present paper, the semi-annual variation generates a paradox because the R–M effect, which is undoubtedly active, enhances the average magnetic activity levels and the occurrence of small and moderate storms. However, because the largest storms are driven by southward pointing field in the GSEQ frame, the R–M effect should actually, on average, decrease the occurrence of large storms at the equinoxes, the opposite of what is observed. Hence, in this section we investigate the occurrence of large geomagnetic disturbances. Panels (d)–(i) of Figure 10 are “ F -year spectrogram” plots, and allow us to study the year-to-year fluctuations in the time-of-year variation in the am index and in the $a\sigma$ indices and compare to the corresponding behaviour of P_{α}/P_o . Each panel gives the normalized mean value in the 36 equal-sized bins of time-of-year F as a function of year and F : hence, for example, the pixels in Figure 10e are coloured according to the value of $\langle am \rangle_{yr} / \langle am \rangle_{all}$. We normalize by dividing by the annual means, $\langle am \rangle_{yr}$, so that the time-of-year variations can always be seen, even at sunspot minimum. The top row of plots shows the solar cycle variations by plotting the variations in the annual means as a ratio of the overall mean value: Panel (a) is for power input into the magnetosphere, $\langle P_{\alpha} \rangle_{yr} / P_o$; (b) is for the am index, $\langle am \rangle_{yr} / \langle am \rangle_{all}$ (and also shows in green the number of substorm onsets N_o , derived from the SML index, $\langle N_o \rangle_{yr} / \langle N_o \rangle_{all}$ as used in Paper 1); (c) shows the annual means for the four $a\sigma$ indices, $\langle a\sigma \rangle_{yr} / \langle a\sigma \rangle_{all}$. The solar-cycle variations of annual means

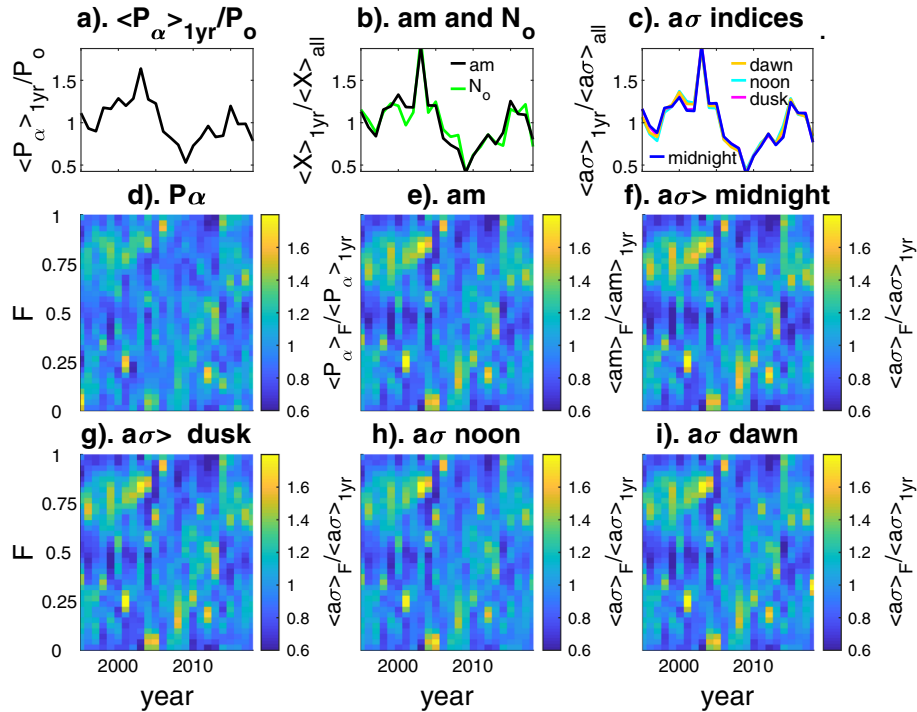


Fig. 10. Top panel: plots of annual means of an index or variable x , $\langle x \rangle_{1\text{yr}}$, for the years 1995–2017, inclusive, where x is: (a) the power input into the magnetosphere, P_α ; (b) the am index (in black) and the number of substorm onsets derived from the SML index, N_o (in green); (c) the $a\sigma$ indices for dawn (orange), noon (cyan), dusk (mauve) and midnight (blue). Middle and lower panels: year- F spectrogram plots of the means in 36 equal-sized bins of F , divided by the mean for that year, $\langle x \rangle_F / \langle x \rangle_{1\text{yr}}$, where x is: (d) P_α ; (e) am ; (f) $a\sigma_{\text{midnight}}$; (g) $a\sigma_{\text{dawn}}$, (h) $a\sigma_{\text{noon}}$, and (i) $a\sigma_{\text{dusk}}$. The data have been smoothed by applying a 3-point running mean to the time series of means in the bins of width $(1/36)$ yr.

shown in parts (a)–(c) of Figure 10 are all very similar indeed. The F -year patterns in parts (d)–(i) are also very similar indeed, in terms of both average levels and individual large events (storms), which show up as orange and yellow pixels. The colour scale used in all panels is the same and one can see the amplitude in the am and $a\sigma$ response patterns is larger than for P_α/P_o , particularly during the larger events. Because the results for am and the four $a\sigma$ indices are so similar, we hereafter show only the results for am .

As in Paper 1, in Figure 11 we subdivide the data for P_α/P_o and am into times when the $[B_Y]_{\text{GSEQ}}$ was positive (middle column) or negative (right-hand column), in order to identify the role of the R–M effect. We allow for the optimum lag $dt_o = 60$ min between the IMF conditions at the nose of the bow shock and the am response that was derived on Section 3.3. The left-hand column repeats the variations for all data for comparison. The top row (Figs. 11a–11c) shows the variations in annual means of P_α/P_o (in black) and am (in mauve). These solar cycle variations are all very similar, although the amplitude is slightly smaller for $[B_Y]_{\text{GSEQ}} < 0$ than for $[B_Y]_{\text{GSEQ}} > 0$ for the years covered by this study. The middle row shows $\langle P_\alpha/P_o \rangle_F / \langle P_\alpha/P_o \rangle_{1\text{yr}}$ and the bottom row $\langle am \rangle_F / \langle am \rangle_{1\text{yr}}$. The R–M effect is clearly evident with persistent increases at the September and March equinoxes for $[B_Y]_{\text{GSEQ}} > 0$ and $[B_Y]_{\text{GSEQ}} < 0$, respectively. The annual variations for the two $[B_Y]_{\text{GSEQ}}$ polarities separately are, again, slightly greater for am (Figs. 11h and 11i) than for P_α/P_o (Figs. 11e and 11f).

For both P_α/P_o and am , Figure 11 demonstrates a clear R–M effect in mean values, detected by the dependence of which is

the favoured equinox for a given IMF $[B_Y]_{\text{GSEQ}}$. However, the picture is not so clear in the occurrence of large storms, particularly in am . Taking a threshold of $\langle am \rangle_F / \langle am \rangle_{1\text{yr}} = 1.7$ (yellow pixels), we can see in Figure 11h that for $[B_Y]_{\text{GSEQ}} > 0$, 13 events occurred at the favoured March equinox, 5 at the unfavoured September equinox, and 4 around the solstices. In Figure 11i we see that for $[B_Y]_{\text{GSEQ}} < 0$ there were 10 events at the favoured September equinox, 3 at the unfavoured March equinox, and 6 around the solstices. Hence the tendency for events to cluster around the favoured equinox is present as predicted for the R–M effect, but Paper 1 (and Appendix B in particular) has explained why we might expect the R–M effect to, if anything, be reducing the magnitude of the largest storms (and hence the number of events over a large threshold) at the favoured equinox.

One additional point to note about the unseparated means (Figs. 11d and 11g) is that we are averaging over roughly 10-day intervals and, given that for a 2-sector, 3-sector and 4-sector structures in the heliospheric field, we remain in one sector for, on average, 13.5 days, 9 days and 6.75 days, this means that the averages are usually taken for one dominant polarity of IMF $[B_Y]_{\text{GSEQ}}$, and there is, in most cases, relatively minor cancellation of effects that depend on the polarity of $[B_Y]_{\text{GSEQ}}$. This is no longer true if we average over all years (instead of one year at a time as in Fig. 11) which will mean that for every F bin we are averaging roughly equal numbers of data with $[B_Y]_{\text{GSEQ}} > 0$ and $[B_Y]_{\text{GSEQ}} < 0$ with very similar occurrence distributions of $|[B_Y]_{\text{GSEQ}}|$ for the two polarities. The results are radically and revealingly different, as shown in

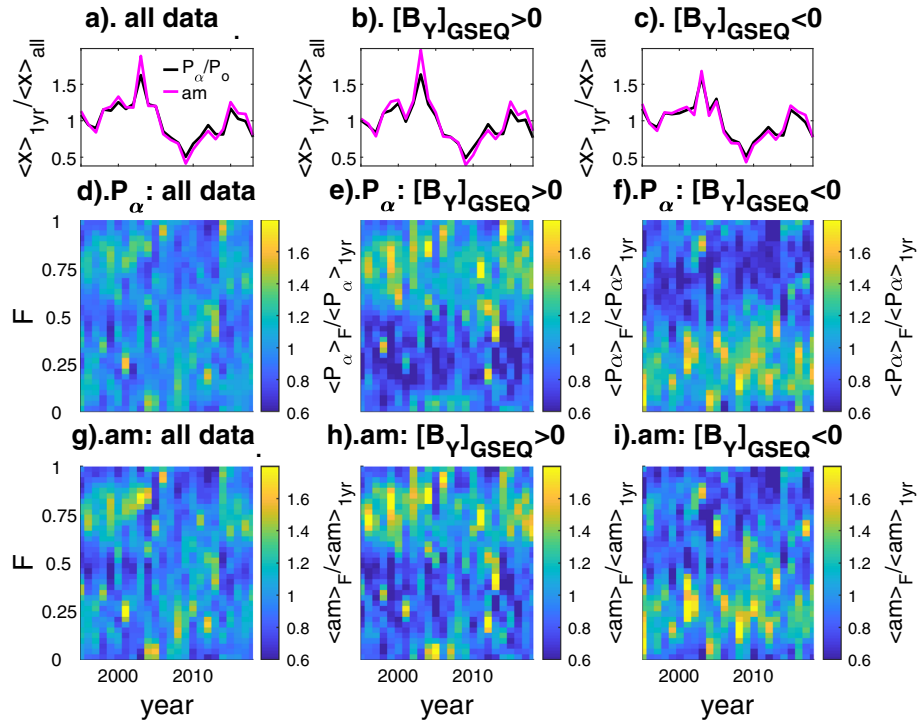


Fig. 11. Identification of the Russell-McPherron effect using the polarity of the IMF $[B_Y]_{GSEQ}$ component. The left-hand column is for all data, the middle column for $[B_Y]_{GSEQ} > 0$ and the right-hand column for $[B_Y]_{GSEQ} < 0$. The top row shows annual means of am and P_{α}/P_o divided by their overall means for the whole interval: respectively, $\langle am \rangle_{1yr}/\langle am \rangle_{all}$ (mauve lines) and $\langle P_{\alpha}/P_o \rangle_{1yr}/P_o$ (black lines). The middle row shows the variations of P_{α}/P_o as a function of fraction-of-year, F and year, $\langle P_{\alpha}/P_o \rangle_{F}/\langle P_{\alpha}/P_o \rangle_{1yr}$ and the bottom row the same for am , $\langle am \rangle_{F}/\langle am \rangle_{1yr}$. As for Figure 10, data are for 1995–2017 and have been averaged into 36-equal width bins of F in each year, and a 3-point running mean applied to the time series to smooth the data.

Figure 12. The left-hand plots in Figure 12 are for am and the right-hand plots are for P_{α}/P_o . The top row shows the variations with F of the means for all years for all data (thick black line), for data with $[B_Y]_{GSEQ} > 0$ (thin line joining open circles) and for data with $[B_Y]_{GSEQ} < 0$ (thin line joining solid triangles). The results now show a significant difference in the behaviour for am and for P_{α}/P_o . For P_{α}/P_o (Fig. 12b) both the $[B_Y]_{GSEQ} > 0$ and $[B_Y]_{GSEQ} < 0$ cases have almost sine-wave forms that are in antiphase. In fact, the positive deflection (at the equinox for which the $[B_Y]_{GSEQ}$ polarity is favoured) is only very slightly larger than the negative deflection (at the equinox for which the $[B_Y]_{GSEQ}$ polarity is unfavoured) and so the average for all data has only a very weak semi-annual variation, because the near-perfect asymmetry between the variations for the two polarities means that they almost cancel and the net semi-annual variation is small. Contrast this with the corresponding variations for am (Fig. 12a) for which the positive deflections at the favoured equinox in the single-polarity $[B_Y]_{GSEQ}$ curves are considerably larger than the negative deflections at the unfavoured equinox. As a result, the variation for all data (thick black line) has a much more marked semi-annual variation. It is this much larger difference between the results at any one equinox between the “favourable” and “unfavourable” polarities of IMF $[B_Y]_{GSEQ}$ that causes the amplification of the semi-annual variation in the am geomagnetic activity index, compared to that in P_{α}/P_o .

This demonstrates that although the R–M effect is working, it is not working in quite the way that is commonly thought, which is the way that was envisaged by Russell & McPherron

(1973) in their seminal paper. If the semi-annual variation were working solely through the modulation of solar wind-magnetosphere coupling by the non-linearity of the response of power input to the magnetosphere to IMF orientation (as envisaged in the original paper), we would expect am and P_{α}/P_o to show the same behaviour in Figures 12a and 12b. This is clearly not the case. Figure 12 shows that for average P_{α}/P_o , the R–M effect is effective, but the resulting semi-annual variation is much smaller than that in average am . The am index reflects the increase in P_{α}/P_o for the favourable polarity of $[B_Y]_{GSEQ}$ but does not reflect the almost equal magnitude decrease in P_{α}/P_o for the unfavourable polarity of $[B_Y]_{GSEQ}$. Hence it is not the non-linearity of the solar wind-magnetosphere energy coupling that gives us most of the R–M effect, rather it is the non-linearity of the geomagnetic response to that energy input. Hence separating the two polarities of the IMF $[B_Y]_{GSEQ}$ component reveals that it is the non-linearity of the am response to P_{α}/P_o , rather than just that of the P_{α}/P_o response to IMF orientation, that is causing the two subsets for $[B_Y]_{GSEQ} > 0$ and $[B_Y]_{GSEQ} < 0$ to combine to give such a strong semi-annual variation in average am .

Figures 12a and 12b deal only with average values and the lower panels of Figure 12 look at the corresponding behaviour in the occurrence of large events. The thick blue, orange and mauve lines in Figures 12c–12f plot the number of events, N , in which a 3-hourly am exceeds the 90, 95 and 99 percentile, respectively, i.e., $am > q(0.90)$, $am > q(0.95)$, and $am > q(0.99)$. Figure 12c is for am and Figure 12d is for the corresponding

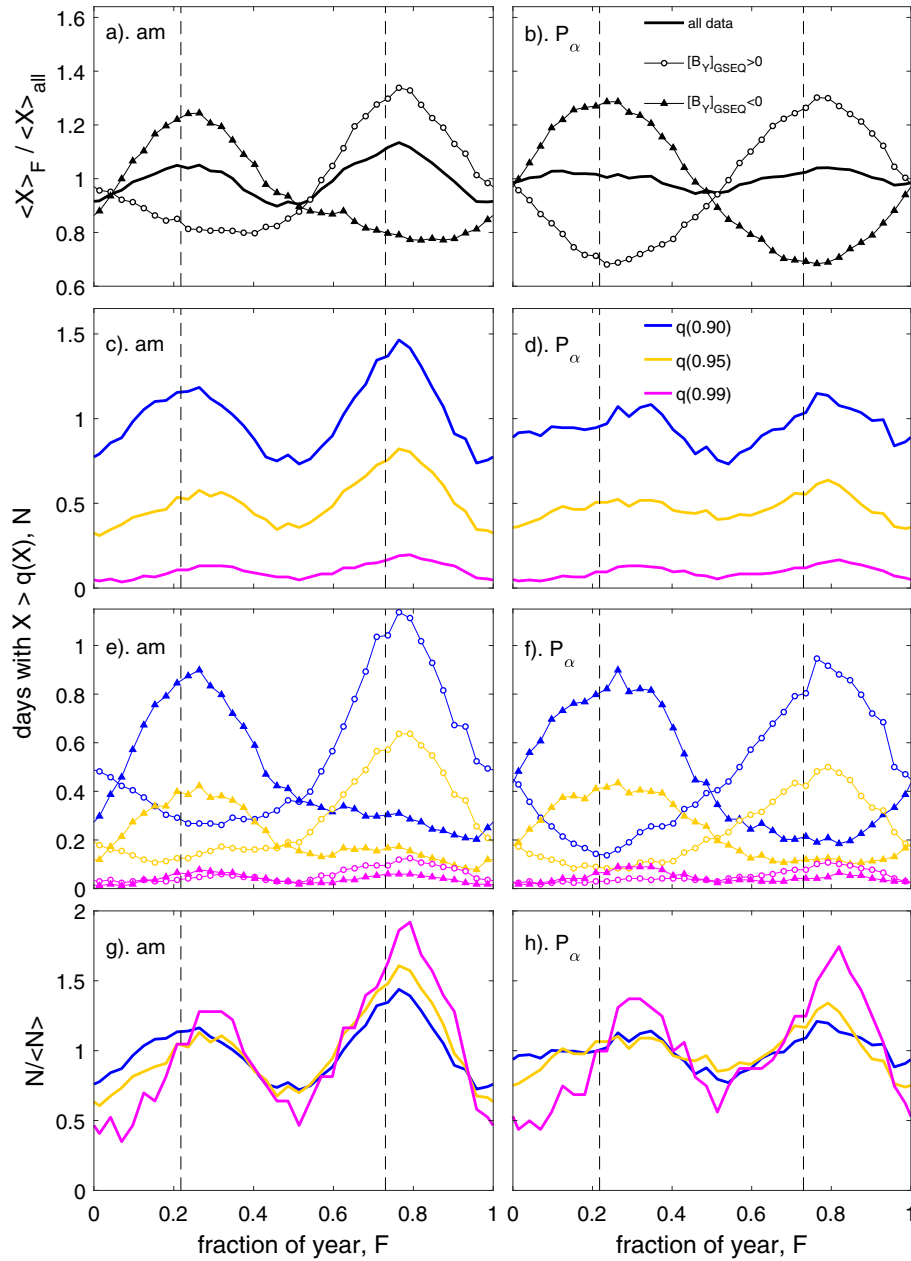


Fig. 12. Analysis of the differences between semi-annual variations in the *am* index (left-hand panels) and in power input to the magnetosphere, P_α/P_o (right-hand panels). In all panels a thick line denotes the variation for all data, a thin line connecting open circles is for IMF $[B_Y]_{GSEQ} > 0$ and a thin line connecting filled triangles is for $[B_Y]_{GSEQ} < 0$. The lines in parts (a and b) are mean values whereas (c–f) show the average number of days per year N when the daily means of *am* (panels c and e) or of P_α/P_o (panels d and f) exceed their 90% quantile (blue lines), 95% quantile (orange lines) and 99% quantile (mauve lines). Parts (g) and (h) plot $N/\langle N \rangle$, the number of days per year N normalized by their average value. Note that the variations of N in (e) and (f) for the separate IMF $[B_Y]_{GSEQ}$ polarities are plotted on a scale that is different to that for all data in (c) and (d). The 90% quantile levels, $q(0.9)$, are 2.031 for $am/\langle am \rangle_{all}$ and 2.081 for P_α/P_o ; the 95% quantile levels, $q(0.95)$, are 2.556 for $am/\langle am \rangle_{all}$ and 2.588 for P_α/P_o ; the 99% quantile levels, $q(0.99)$, are 4.193 for $am/\langle am \rangle_{all}$ and 4.400 for P_α/P_o . The close similarity between these pairs quantile values arises from the similarity of the normalised c.d.f.s shown in Figure 6 of the present paper and Figure 8b of Paper 1.

P_α/P_o for the same data subset, both being for both IMF $[B_Y]_{GSEQ}$ polarities. Similar behaviour is seen as for the mean values, with the amplitude of the semi-annual variation in *am* always exceeding the corresponding one in P_α/P_o . Figures 12e and 12f break the variations in Figures 12c and 12d into their $[B_Y]_{GSEQ} > 0$

and $[B_Y]_{GSEQ} < 0$ subsets, using the same symbols as in parts (a) and (b). It can be seen that the amplification of the semi-annual variation of the occurrence of large *am* events occurs for the same reasons as for the mean values. Lastly Figures 12g and 12h compare the normalised variations of all

events above the thresholds by plotting $N/\langle N \rangle$ for both polarities. By definition, these variations in $N/\langle N \rangle$ are always about unity and the amplitudes of the semiannual variations in event occurrence can be compared. It can be seen in Figures 12g and 12h that for both am and P_x/P_o , the fractional amplitude of the semi-annual variation in storm occurrence is larger for the larger storms. Comparing each line in Figure 12g with its corresponding line in Figure 12h, we can see the amplification of the semi-annual variations in the occurrence of large am events compared to the corresponding variation for P_x/P_o . However, this also shows the amplification is greatest for the smaller events and decreases with a higher event threshold, such that for the top 1% of events, the amplitude of the semi-annual variation in P_x/P_o is approaching that in am and the amplification is not much greater than unity. This runs counter to the Russell & McPherron (1973) explanation of large storms which was that small variations in P_x/P_o induced by the R–M effect caused a large increase in the number of great storms through the amplification effect. Figure 12 shows that in fact the amplification factor is smallest for the largest storms.

This variation in the amplification in the am response to P_x/P_o variations is puzzling. We know it is not a general feature of the overall variation of am with P_x/P_o as that is linear on all timescales. However, there is scatter about that linear variation and the effect must be hidden in that scatter. We will return to this point in Section 7. Figure 13 clarifies how the behaviour noted in Figure 12 is occurring. The upper plots show the variation of the probability distribution functions (p.d.f.s) of P_x/P_o with F for (left) IMF $[B_Y]_{\text{GSEQ}} < 0$ and (right) $[B_Y]_{\text{GSEQ}} > 0$. These are consistent with the means and occurrence frequencies for P_x/P_o shown in the right hand panels of Figure 12. The bottom panels of Figure 13 shows the am amplification, expressed as $(am/\langle am \rangle_{\text{all}})/(P_x/P_o)$, as a function of F and for the same P_x/P_o bins as for the p.d.f.s in the upper panels. What is noticeable is that the amplification of am , relative to P_x , is greater at the equinoxes and is particularly effective in raising am at low P_x/P_o . It is this effect that causes increases in am for the unfavourable $[B_Y]_{\text{GSEQ}}$ polarity which means that the decreases for the unfavourable $[B_Y]_{\text{GSEQ}}$ polarity cancel the increases for the favourable $[B_Y]_{\text{GSEQ}}$ polarity to a relatively small extent only. This cancellation occurs to a much greater extent for P_x/P_o , giving a smaller semi-annual variation. A key point about Figure 13 is that it shows that the mechanism responsible for this amplification in am is only working at the equinoxes because we do not see any such amplification at the solstices.

To summarise this section, we have shown that the pattern of variations in F -year spectrogram plots in geomagnetic activity and power input into the magnetosphere are very similar in both average values and the occurrence of large events and that the R–M effect is at the heart of both; however, there is a non-linear amplification of the semi-annual variation in the geomagnetic response. We show that there is only a very small asymmetry in the increase in power input into the magnetosphere P_x/P_o at a given equinox for the “favourable” polarity of $[B_Y]_{\text{GSEQ}}$ (via the R–M) effect, compared to the decrease for the “unfavourable” polarity of $[B_Y]_{\text{GSEQ}}$ but that this difference is much greater in the am response and it is this that amplifies the semi-annual variation in am . We conclude that there is a second mechanism at work at the equinoxes that amplifies the am response to a given P_x/P_o .

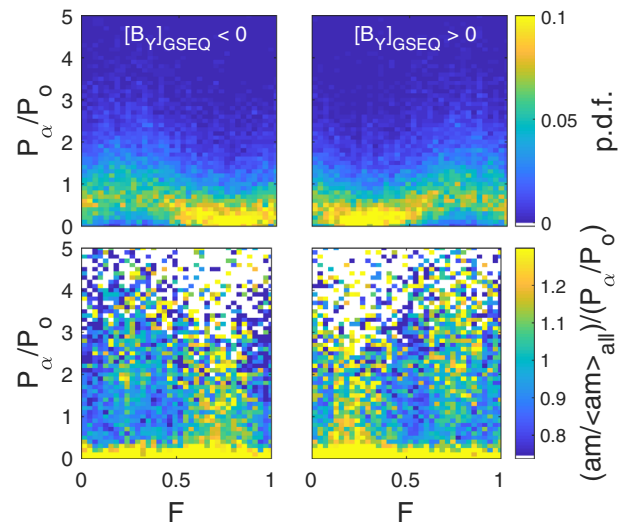


Fig. 13. Plots of (top) the probability distribution functions of (P_x/P_o) as a function of F and (bottom) the am amplification factor, $(am/\langle am \rangle_{\text{all}})/(P_x/P_o)$, as a function of F and in the same (P_x/P_o) bins as the p.d.f.s in the top panels. The left hand panels are for IMF $[B_Y]_{\text{GSEQ}} < 0$, the right hand panels are for IMF $[B_Y]_{\text{GSEQ}} > 0$.

5 Variations with solar wind dynamic pressure

As discussed in the introduction, there is evidence that geomagnetic activity depends on both the amount of magnetospheric open flux and on the solar wind dynamic pressure, p_{SW} . Given that the dominant mechanism that allows power input into the magnetosphere is the generation of open flux, this implies that geomagnetic activity should be increased by both solar wind power input to the magnetosphere and the solar wind dynamic pressure. This is confirmed by Figure 14 which colour-codes the average am in bins of width 0.15 in both P_x/P_o (along the x axis) and $p_{\text{SW}}/\langle p_{\text{SW}} \rangle_{\text{all}}$ (along the y axis). Figure 14 shows that am increases both with increased P_x at a fixed p_{SW} and with increased p_{SW} at a fixed P_x . (For both p_{SW} and P_x/P_o , values are taken a time dt_o before the am data, where $dt_o = 60$ min. is the optimum response lag, as derived in Sect. 3.3). The grey points in Figure 15a are a scatter plot of 3-hourly am data as a function of the 3-hourly P_x/P_o values (again using the optimum response lag dt_o of 60 min) and Figure 15b studies the extent to which the scatter around the best regression is explained by p_{SW} . In Figure 15a the mauve line is the linear regression fit to the 3-hourly data, given by

$$am_{\text{fit}} = (17.464 \pm 0.045) \times (P_x/P_o) + (1.141 \pm 0.065). \quad (3)$$

Higher-order polynomial fits were carried out but differences were always negligible. The orange points are mean values in 1 percentile ranges of P_x/P_o and the errors bars are plus and minus one standard deviation. The correlation coefficient between am and P_x/P_o for this 3-h timescale is $r_c = 0.867$ which means P_x/P_o is explaining $100 \times r_c^2 = 75.2\%$ of the variation in am . The fit residuals for this linear regression, given by

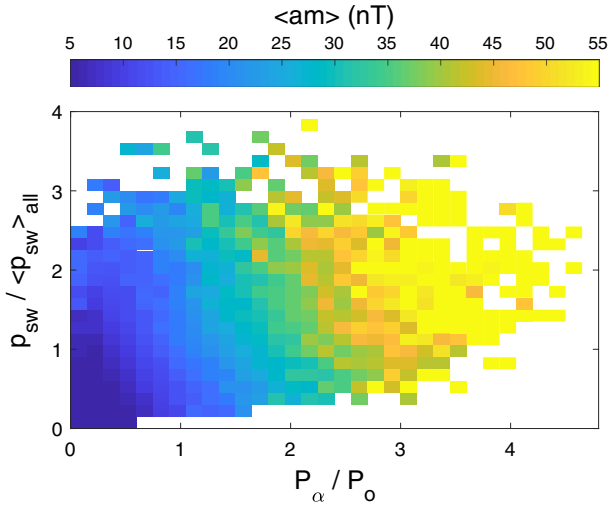


Fig. 14. Mean values of am as a function of normalised power input into the magnetosphere, P_α/P_o (horizontal axis) and normalised solar wind dynamic pressure, $p_{SW}/\langle p_{SW} \rangle_{all}$ (vertical axis). The mean values of am are evaluated in bins of width 0.15 in both P_α/P_o and $p_{SW}/\langle p_{SW} \rangle_{all}$ and pixels colour-contoured according the scale shown. Only bins containing at least 5 samples are considered.

$$\Delta am = am - am_{fit}, \quad (4)$$

were then evaluated and are plotted in Figure 15b as a function of normalized solar wind dynamic pressure $p_{SW}/\langle p_{SW} \rangle_{all}$. As expected from Figure 14, the average values of Δam increase with $p_{SW}/\langle p_{SW} \rangle_{all}$ but there is extremely large scatter, indicating that although p_{SW} is a factor, it is certainly not the only factor influencing these fit residuals. However, Figures 14 and 15 show that the amplification of the am response to a given P_α/P_o , identified in Figures 12 and 13 as a key component of the semiannual variation, increases with increased solar wind dynamic pressure, p_{SW} .

Figure 16 plots the fit residuals Δam as a function of F and UT . Given that am shows an equinoctial pattern and that P_α/P_o does not, it is not surprising that the fit residuals Δam form an equinoctial pattern. This can be seen in Figure 16a which is for all data. Figures 16b–16d subdivide the data into the three terciles of solar wind dynamic pressure, p_{SW} . These plots all show the equinoctial pattern and comparing them reveals that this pattern grows in amplitude as p_{SW} increases, revealing that solar wind dynamic pressure is a key factor in the generation of the equinoctial pattern as well as a contributor to the scatter in the relationship between P_α/P_o and the am index.

Figure 17 studies this relationship in more detail using 20 quantile ranges in p_{SW} that each include 5% of the data. It shows that the amplitude of the equinoctial F – UT pattern, here quantified by the standard deviation of the 288 data points that go into each pattern, $\sigma(\langle \Delta am \rangle_{F,UT})$, varies almost linearly with p_{SW} . The alternate grey and white bands define the quantile ranges in p_{SW} that were used.

To summarise this section, we have confirmed the results of previous studies discussed in the introduction (Schildge and Siscoe, 1970; Caan et al., 1973; Kokubun et al., 1977; Karlsson et al., 2000; Yue et al., 2010) that indicated enhanced solar wind

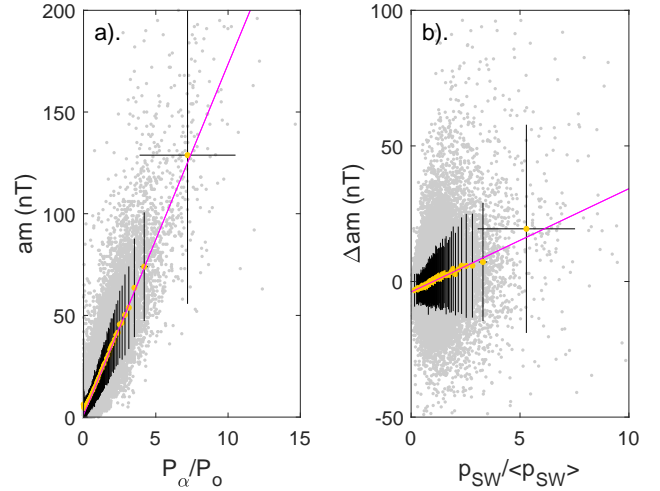


Fig. 15. Analysis of 3-hourly am data. (a) The grey points form a scatter plot of am against 3-hourly means of power input into the magnetosphere, P_α/P_o , generated by averaging over 3 h intervals that are shifted forward in time by the derived best lag of $dt_o = 60$ min (see Fig. 7a) relative to the three-hourly intervals in which am is evaluated. The orange points are the mean values averaged in 1% quantile ranges of P_α/P_o , i.e., $q(0) \leq \langle P_\alpha/P_o \rangle_{\tau=3h} < q(0.01)$, $q(0.01) \leq \langle P_\alpha/P_o \rangle_{\tau=3h} < q(0.02)$, up to $q(0.99) \leq \langle P_\alpha/P_o \rangle_{\tau=3h} < q(1)$. The black error bars are the plus and minus one standard deviation in those means. The mauve is the best-fit OLS linear regression to the 3-hourly data. (b) the grey points are a scatter plot of the fit residuals Δam for the fit shown in (a); this is the difference between each three-hourly am value and the best fit linear regression value based on the corresponding $\langle P_\alpha/P_o \rangle_{\tau=3h}$ value ($\Delta am = am - am_{fit}$), plotted as a function of the simultaneous three-hourly mean of the normalized solar wind dynamic pressure $\langle p_{SW} \rangle_{\tau=3h}/\langle p_{SW} \rangle_{all}$. The orange points in (b) are means in 1% quantile ranges of $\langle p_{SW} \rangle_{\tau=3h}$ and error bars are plus and minus one standard deviation in the mean Δam . The mauve line is the best linear regression to the 3-hourly values.

dynamic pressure enhances geomagnetic activity. We have quantified the effect and show that it is responsible for the equinoctial pattern of the geomagnetic response which increases in amplitude with enhanced solar wind dynamic pressure.

6 The time-of-year and Universal Time variation

Figure 18 analyses the contributions to the (a) time-of-year F and (b) UT variations in am . The orange lines are am_{fit} variations, derived from the P_α/P_o data using the linear regression equation (1). As expected from Figure 12, the semi-annual variation with F (averaged over all UT) in am_{fit} is much smaller amplitude than that in am (black line). The mauve, blue and cyan lines show the means of the fit residuals Δam from equation (4) for the upper, middle and lower tercile ranges of the solar wind dynamic pressure, p_{SW} . Figure 18a shows that the semi-annual variation is present for the lower and middle terciles of p_{SW} but the largest contribution comes from the

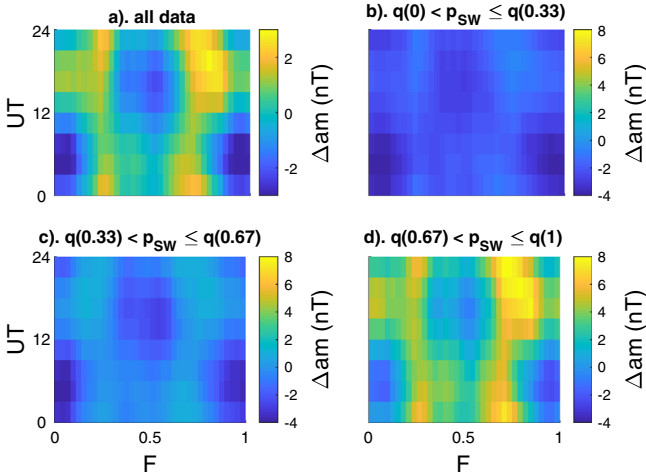


Fig. 16. F – UT pattern plots of the fit residuals Δam in Figure 15b for 1995–2017, inclusive. In each case the plots are constructed using hourly means of the solar wind dynamic pressure p_{SW} and the three-hourly fit residuals Δam are interpolated to the mid-point of those hourly intervals. All plots are then smoothed with a 1–3–1 triangular weighting filter in both the F and UT dimension. (a) The overall mean value of Δam . (b) The mean Δam for the lower tercile of the simultaneous solar wind dynamic pressure, $\langle \Delta am \rangle_{F,UT}$ for $q(0) \leq \langle p_{SW} \rangle_{\tau=1h} < q(0.33)$. (c) The mean Δam for the middle tercile of the simultaneous solar wind dynamic pressure, i.e., $\langle \Delta am \rangle_{F,UT}$ for $q(0.33) \leq \langle p_{SW} \rangle_{\tau=1h} < q(0.67)$. (d) The mean Δam for the upper tercile of the simultaneous solar wind dynamic pressure, $\langle \Delta am \rangle_{F,UT}$ for $q(0.67) \leq \langle p_{SW} \rangle_{\tau=1h} < q(1)$. Note that in parts (b–d) the same color scale is used to emphasize that the equinoctial pattern, although present for all three ranges of p_{SW} , is of amplitude that increases with p_{SW} and is much larger in amplitude for the largest p_{SW} values. This relationship is further studied by Figure 17.

highest p_{SW} . Figure 18b is the corresponding plot for the UT variations. In this case, there is no UT variation in P_{α}/P_o and hence am_{fit} . The UT variation, like the F variation, is seen in all of the average variations of Δam but again is strongest for the larger tercile of p_{SW} . This indicates that p_{SW} also plays a role in generating the UT variation.

This section has provided further tests of theoretical and model interpretations of the variations with dynamic pressure. It shows that not only does the amplification of the semi-annual variation increase with increased solar wind dynamic pressure, so do the amplitudes of the equinoctial pattern and of the UT variation.

7 Discussion

We have presented a purely empirical analysis of the response of the am geomagnetic index (and its 4 MLT sector sub-indices, $a\sigma_{dawn}$, $a\sigma_{noon}$, $a\sigma_{dusk}$, and $a\sigma_{midnight}$) to interplanetary conditions arriving at the nose of Earth’s bow shock as a function of time of year, F , Universal Time, UT , and geomagnetic activity level, using one-minute interplanetary data averaged into 3-h windows. We have made use of the analysis of the effect of data gaps by Lockwood et al. (2019a) to ensure that

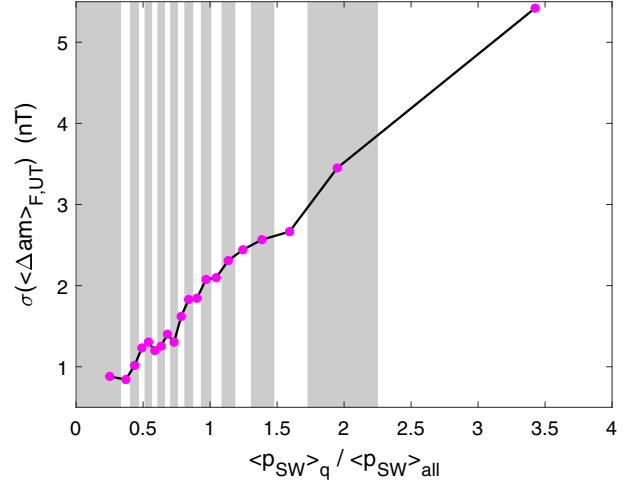


Fig. 17. The amplitude of the equinoctial pattern as a function of normalised solar wind dynamic pressure. The pattern amplitude is quantified by the standard deviation of the mean values of Δam in the 288 F – UT bins used to construct patterns like those shown in Figure 10, $\sigma(\langle \Delta am \rangle_{F,UT})$. Patterns were constructed for 20 quantile ranges of the hourly mean solar wind dynamic pressure p_{SW} and $\sigma(\langle \Delta am \rangle_{F,UT})$ for each is plotted as a function of $\langle p_{SW} \rangle_q / \langle p_{SW} \rangle_{all}$, where $\langle p_{SW} \rangle_q$ is the mean dynamic pressure in the quantile range and $\langle p_{SW} \rangle_{all}$ is the mean for all the data (which are for 1995–2017). The grey and white bands define the 20 quantile ranges of p_{SW} employed. There are a total of 192,719 valid hourly means of p_{SW} in the dataset and so each of the 20 quantile ranges contains 9636 samples.

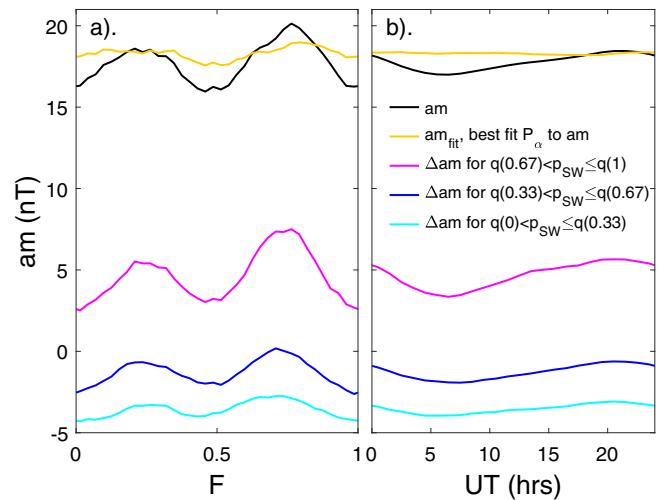


Fig. 18. Analysis of the contributions to the (a) semi-annual and (b) UT variations of the am index observed in the interval 1995–2017, inclusive. Mean values are shown as a function of (a) time-of-year F and (b) UT of: (black lines) the observed am data; (orange lines) am_{fit} , the best-fit of power input to the magnetosphere, P_{α}/P_o to am ; (mauve lines) the fit residual Δam for the upper tercile of the solar wind dynamic pressure, $q(0.67) < p_{SW} \leq q(1)$; (blue lines) the fit residual Δam for the middle tercile of the solar wind dynamic pressure, $q(0.33) < p_{SW} \leq q(0.67)$; and (cyan lines) the fit residual Δam for the lower tercile of the solar wind dynamic pressure, $q(0) < p_{SW} \leq q(0.33)$.

the error they cause to estimates of power input into the magnetosphere is below 5%. In order to compare the interplanetary data with the geomagnetic data we need to know the best response lag to employ to ensure we are comparing the most relevant interplanetary data. In Section 3.3, we used averages over same interval durations as used to compile the *am* geomagnetic data (3-hourly) but the averaging intervals were shifted in steps of one minute in order to determine the best response lag (taken to be the lag giving peak correlation). We show that there is considerable variability in response times between about 10 min and about 100 min and there is some systematic variation in the derived distribution of response lag with activity level - the mode of the overall distribution being close to 60 min. Hence using a single value for the response lag is an approximation; however, in this context it must be remembered that using an ideal individual lag for each case would also be an approximation because the driving power input may be relevant over an interval that could be longer, or shorter, than the 3 h used. However, using 3-h interplanetary data and neglecting such a response lag completely (by using simultaneous data) would result in, on average, one third of each interplanetary sample not being the most relevant data and using an overall average lag is hence better than using simultaneous data.

We have presented a number of empirical analyses that will be used to constrain interpretation in a later paper in this series which will employ both empirical and MHD models of the magnetosphere.

The results presented in the current paper confirm that the R–M effect is active and the key part of the semi-annual variation in geomagnetic activity. In the midnight sector we find that 42.9% of the semi-annual variation in geomagnetic activity can be explained as the semi-annual variation in the power input into the magnetosphere, P_α , which is almost entirely due to the Russell-McPherron effect. This agrees well with the results of McPherron et al. (2013) who employed the *AL* auroral electrojet and a simpler interplanetary coupling function (the half-wave rectified dawn-to-dusk interplanetary electric field $E_{DD} = V_{SW}B_S$) and the linear prediction filter formalism which enabled them to allow for systematic variations in the relationship between E_{DD} and the *AL* index (for example with time of year because *AL* is a northern hemisphere index only and so has a strong seasonal response). At the same time, we find that in 3-hourly means the linear correlation coefficient between the *am* index and P_α is 0.867, meaning that 75.2% of the variation of *am* is explained by P_α . Furthermore, in this paper and in Paper 1, by sorting the data by $[B_Y]_{GSEQ}$ we have shown that the R–M effect dominates the *am* response in both average levels and the occurrence of large events. The patterns in the *F*-year spectrogram plots presented in Figure 10 for P_α , *am* and the four $\alpha\sigma$ indices are very similar, it is just the amplitude of the pattern varies with the amplification factor for the geomagnetic index in question. Furthermore, sorting by the polarity of the IMF $[B_Y]_{GSEQ}$ component confirms the patterns originate from the R–M effect. Hence we conclude that it is not that the R–M effect is partially responsible for the semi-annual variation, rather it is almost wholly responsible. However, Figures 12 and 13 show us how the amplification of a very small semi-annual variation in P_α to give a much larger semi-annual variation in *am* occurs. The R–M effect only causes a slight asymmetry in how much average P_α (or the occurrence

of large P_α events) is enhanced for the “favourable” polarity of the IMF $[B_Y]_{GSEQ}$ at a given equinox compared to how much it is decreased by the “non-favourable” polarity of the IMF $[B_Y]_{GSEQ}$. However, because of a non-linearity in the *am* response this drives a larger asymmetry in geomagnetic activity. We note that in their original paper, Russell & McPherron (1973) did comment on the need for this amplification; however, the discussion was conflated with that on the occurrence of large storms which, as discussed in the introduction, raises the involvement of large, negative $[B_Z]_{GSEQ}$ which, when it becomes dominant over $|[B_Y]_{GSEQ}|$ (i.e., clock angles in GSEQ become greater than about 120°), make the R–M have the opposite effect to that for the traditional R–M effect as proposed by Russell & McPherron (1973).

However, there is still a puzzle to resolve here because when we look at a scatter plot of all *am* data as a function of P_α (as for the 3-hourly means in Fig. 15a) we see only a very slight non-linearity but not one large enough to generate the contrasting the behaviours of *am* and P_α seen in Figure 12.

Figures 14 and 15b both demonstrate that *am* depends on both P_α and the solar wind dynamic pressure, p_{SW} . These two factors have common elements but differ in the terms that depend on the IMF and its orientation. For the best-fit coupling exponent used here of $\alpha = 0.44$, as derived for all averaging timescales by Lockwood et al. (2019b), P_α varies as $m_{SW}^{0.227} N_{SW}^{0.227} V_{SW}^{1.453} B^{0.88} \sin^4(\theta/2)$ where m_{SW} is the mean solar wind ion mass, N_{SW} is the number density, V_{SW} is the solar wind speed, B the IMF magnitude and θ is the IMF clock angle in the GSM frame. On the other hand, $p_{SW} = m_{SW} N_{SW} V_{SW}^2$ and so the two factors are different but also have terms in common and so there will be some systematic dependence of one on the other. Figure 12b shows that the fit residuals of the best fit of P_α/P_o to *am* depends on p_{SW} implying there is an additional dependence of *am* on p_{SW} . Interestingly the fit residuals (Fig. 16), show the equinoctial *F–UT* pattern (Cliver et al., 2000) which increases in amplitude linearly with increased p_{SW} (Fig. 17). Given that the equinoctial pattern is present in *am* but absent in P_α this strongly implies that p_{SW} introduces and additional variation to geomagnetic activity that includes the equinoctial *F–UT* pattern. Naturally, because these fit residuals show an equinoctial *F–UT* pattern, they will also show an additional semi-annual variation that is not accounted for by P_α on its own. Figure 18a confirms this and that the amplitude of the semiannual variation increases with and p_{SW} . An interesting finding is presented in Figure 18b that shows that these fit residuals also show the *UT* variation which also increases in amplitude as p_{SW} increases.

Figure 19 investigates further the complex inter-relationship between p_{SW} and P_α and its implications. The combined *am*, p_{SW} and P_α/P_o data are averaged into 36-equal width bins of *F* and divided into the two polarities of IMF $[B_Y]_{GSEQ}$ (only to show there is no significant difference between the two) and 5 quantile ranges of p_{SW} . The averages of *am* are plotted as a function of the corresponding averages of P_α/P_o for each of the 5 quantile ranges of p_{SW} : the $[B_Y]_{GSEQ}$ polarities are distinguished by the symbols used, and the p_{SW} quantile ranges by the colors used. The black lines are 3rd-order polynomial fits to the data and are drawn only between the largest and smallest mean value of P_α/P_o for the quantile range of p_{SW} in question: (note that, because of the common factors in p_{SW} and P_α , that

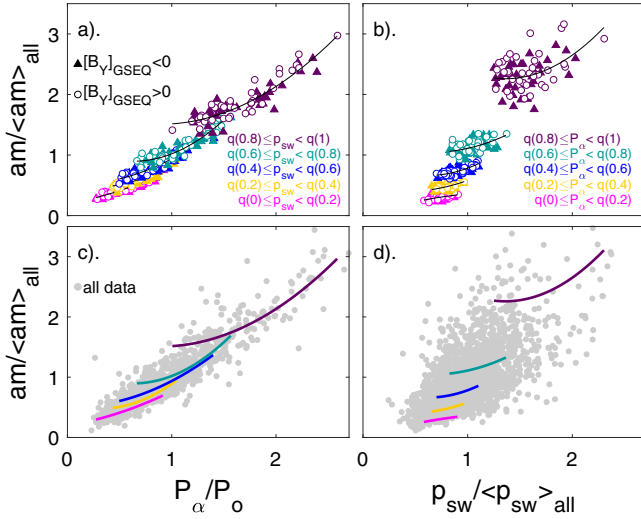


Fig. 19. Analysis of the effects on am of (left column) power input to the magnetosphere P_α/P_o at a given solar wind dynamic pressure p_{SW} and of (right column) the effects of p_{SW} at a given P_α/P_o . Values of $am/\langle am \rangle_{all}$ are plotted as a function of corresponding normalised values of (left) P_α and (right) p_{SW} . In (a) data are averaged into 5 quantile ranges of the normalised solar wind dynamic pressure $p_{SW}/\langle p_{SW} \rangle_{all}$, 36 bins of time-of-year F , and by the polarity of the IMF Y component in GSEQ, $[B_Y]_{GSEQ}$: the means of $am/\langle am \rangle_{all}$ are plotted against the corresponding means of P_α/P_o . In (b) data are averaged into 5 quantiles of normalised power input to the magnetosphere P_α/P_o , 36 bins of time-of-year F , and by the $[B_Y]_{GSEQ}$ polarity and the means of $am/\langle am \rangle_{all}$ are plotted against the corresponding means of $p_{SW}/\langle p_{SW} \rangle_{all}$. The black lines in the upper panels are 3rd-order polynomial fits in each case, fitted to data for all $[B_Y]_{GSEQ}$ drawn over the range of the averaged data for the quantile range in question. The points are coloured according to the quantile range as given by the key. The lines are also plotted (this time using the same colours as the points in the upper panels) in the corresponding lower panel. The grey points show a scatter plot of all 10-day average values.

range varies with p_{SW}). These polynomial fit lines are re-plotted in Figure 19c, using the same colour scheme as for the data points in part (a), and superposed on a scatter plot of averages for all data in time bins of 1/36 yr (the grey points). It can be seen that at each constant p_{SW} value, am has non-linear dependence on P_α/P_o which is not apparent in the overall scatter plot. Figures 19a and 19c show the variation of am with P_α/P_o in 5 equal sized quantile ranges of p_{SW} . Figures 19b and 19d show the corresponding variation of am with p_{SW} in 5 equal sized quantile ranges of P_α/P_o ; they show that am also depends non-linearly on p_{SW} at a fixed P_α/P_o .

The key point about Figure 19 is that when we look at a constant solar wind dynamic pressure p_{SW} we do see a highly non-linear increase in geomagnetic activity (am) with the power input into the magnetosphere P_α , of the kind needed to explain the amplification of the geomagnetic response (and hence of the semi-annual variation) to a relatively small R–M effect in P_α . This is lost in the overall scatter plots of P_α against am (which appear linear with some scatter) because of the common factors in p_{SW} and P_α . However, Figure 19 strongly suggest that p_{SW}

has a distinct and different physical effect from P_α and this is supported by the findings presented in the current paper that the amplification of the am response, the equinoctial pattern and the UT variation arise from the effect of p_{SW} rather than the effect of P_α . The concept of a distinct and different influence of p_{SW} on the nightside magnetosphere and the substorm phenomenon has been reported several times in the literature. Increases in p_{SW} have been reported to trigger onsets of full substorm expansion phases by, for example, Schieldge & Siscoe (1970), Kokubun et al. (1977) and Yue et al. (2010) and Caan et al. (1973) showed that, statistically, the magnetic energy density in the near-Earth tail lobes (that powers substorm expansion phases) was increased by both by prior intervals of southward-pointing IMF and solar wind dynamic pressure, p_{SW} . An effect of p_{SW} was directly demonstrated directly by Karlsson et al. (2000) who showed that near-Earth tail energy content was reduced if p_{SW} decreased and that sudden decreases caused quenching of any substorm expansion that had recently begun. Lockwood, 2013; Lockwood et al., 2014) and Finch et al. (2008) have noted that indices that are strongly influenced by the substorm current wedge have a strong dependence on V_{SW}^2 and hence p_{SW} . Finch et al. (2008) noted that only magnetometer stations closest to the nightside auroral electrojet showed both the equinoctial $F-UT$ pattern and the V_{SW}^2 dependence. Lockwood (2013) argues that this implies that p_{SW} influences the auroral electrojet and the equinoctial $F-UT$ pattern by constraining the near-Earth tail such that the appending of open flux to the tail lobes of the magnetosphere increases the field and hence the stored energy density and magnetic shear across the cross-tail current sheet. This does not happen further down the tail where the magnetopause boundary becomes aligned with the solar wind flow and the magnetic pressure in the lobes, and hence the field, is set by the balance with static pressure in interplanetary space. Hence, at these large negative X_{GSE} , adding open flux just causes the tail to flare in cross-sectional area and the field in the lobes and the magnetic shear across, and hence total current in, the cross-tail current all remain constant. Thus there is considerable evidence for a separate role of solar wind dynamic pressure p_{SW} in modulating the storage and release of the energy extracted from the solar wind, P_α in the near-Earth tail of the magnetosphere.

8 Conclusions

This paper has presented a collection of empirical results concerning the semi-annual variation in geomagnetic activity. Interpretation will largely be left to a subsequent paper in this series which will make use of empirical and numerical MHD models of the magnetosphere. In this section we bring together the summary conclusions of each section of this paper.

We have presented an initial study of 2 years' data on the semi-annual variation in transpolar voltage and flux transfer. We find there is a semi-annual variation in transpolar voltage but it is not as large in amplitude as that in geomagnetic activity which is consistent with the latter showing a non-linear (quadratic) variation with transpolar voltage. We find that during the persistent minimum of the UT variation in geomagnetic activity defined in Paper 1 there is a persistent decrease in transpolar voltage which is potentially consistent with a decrease in

reconnection voltage in the cross-tail current sheet. Confirmation of these findings using a larger dataset of transpolar voltage measurements will be presented in a later paper in this series, but the great consistency with which we find the features described (in both polar caps and in each of the two years studied here) leads us to believe that they are real effects.

We have studied the response of geomagnetic activity to power input to the magnetosphere, estimated using interplanetary data from 1995 onwards which is relatively free of data gaps. This is important because previous work has demonstrated that large errors are introduced into studies of solar wind magnetosphere coupling by data gaps (Lockwood et al., 2019a). We find no consistent variation in the response delay with time-of-year, F . There is a 2 sigma spread in the lag values of approximately 10–100 min and some systematic change in the distribution with activity level but, overall, a lag of 60 min is optimum for the whole dataset. Using this lag we have shown that the pattern of variations in F -year spectrogram plots in geomagnetic activity and power input into the magnetosphere are very similar, both for average values and the occurrence of large events, and that the R–M effect is at the heart of both. However the effect on power input into the magnetosphere is very small and there is a non-linear amplification of the semi-annual variation in the geomagnetic response such that a very small asymmetry in power input into the magnetosphere P_α between the “favourable” and “unfavourable” polarities of $[B_Y]_{\text{GSEQ}}$ generates a greatly amplified geomagnetic semi-annual response.

The origin of this amplification will be discussed in full in a later paper. However, as discussed in the last section, the analysis presented here indicates strongly that it is associated with solar wind dynamic pressure and its role in squeezing the near Earth tail and so modulating the storage and release of energy extracted from the solar wind in the near-Earth tail where the tail radius is still flaring with the $-X_{\text{GSE}}$ coordinate and so dynamic pressure is a factor. In this paper we have shown that the equinoctial pattern is found in the residuals of fits of P_α to the am index and that the amplitude of these equinoctial patterns in the am fit residuals increases linearly with solar wind dynamic pressure p_{SW} . Similarly, the UT variation in am is found in these fit residuals and also increases in amplitude with solar wind dynamic pressure. This strongly suggests the solar wind pressure is a distinct influence of geomagnetic activity. In a later paper we will use empirical and numerical MHD models of the magnetosphere to study the role of solar wind dynamic pressure as a function of dipole tilt and see if the models can produce the influence of solar wind dynamic pressure on the equinoctial F – UT pattern, on the UT variation, and on the amplification of the variation of power input that is inferred here. One finding that needs explanation is why the amplification of the am response is greater at the equinoxes, as shown by Figure 13. With understanding gained about these effects we aim to revisit the paradox of large geomagnetic storms and the fact that their occurrence peaks at the equinoxes, yet they are often driven by large southward field in the GSEQ frame, which should make them less common at the equinoxes.

Acknowledgements. This work is supported by a number of grants. CEW, MJO, CJS and ML at the University of Reading are supported by STFC consolidated grant number ST/M000885/1 and CEW is also supported by STFC grant ST/R000921/1 and NERC grant NE/P017274/1. The work of

ML, LAB and MJO at University of Reading is also supported by the SWIGS NERC Directed Highlight Topic Grant number NE/P016928/1/. The work of JCC at the University of Southampton is supported by the UK Natural Environment Research Council (NERC) grant number NE/L007177/1 and by Science and Technology Facilities Council (STFC) Ernest Rutherford grant ST/L002809/1 and Consolidated grant ST/R000719/1. Funding for KAW at University of Saskatchewan was provided by the Canadian Foundation for Innovation (CFI), the Province of Saskatchewan, and a Discovery Grant from the Natural Sciences and Engineering Research Council (NSERC) of Canada. Initial work by KAW for this paper was carried out at University of Reading on sabbatical leave from University of Saskatchewan. The authors are also grateful to the staff of the Space Physics Data Facility, NASA/Goddard Space Flight Center, who prepared and made available the OMNI2 dataset used: these interplanetary data were downloaded from <http://omniweb.gsfc.nasa.gov/ow.html>. We are also grateful to the staff of L'École et Observatoire des Sciences de la Terre (EOST), a joint of the University of Strasbourg and the French National Center for Scientific Research (CNRS) and the International Service of Geomagnetic Indices (ISGI) for making the am and $a\sigma$ indices available from http://isgi.unistra.fr/data_download.php. The editor thanks two anonymous reviewers for their assistance in evaluating this paper.

References

- Adebesin BO. 2016. Investigation into the linear relationship between the AE, Dst and ap indices during different magnetic and solar activity conditions. *Acta Geod Geophys* **51**(2): 315–331. <https://doi.org/10.1007/s40328-015-0128-2>.
- Bargatze LFB, McPherron RL, Baker DN. 1986. Solar wind-magnetosphere energy input functions. In: *Solar wind-magnetosphere coupling*, Kamide Y., Slavin J.A. (Eds.), Terra Scientific Publishing Company, Tokyo, Japan, and D. Reidel Publishing Company, Dordrecht, Holland, pp. 101–109. https://doi.org/10.1007/978-94-009-4722-1_7.
- Boudouridis A, Zesta E, Lyons LR, Anderson PC, Lummerzheim D. 2005. Enhanced solar wind geoeffectiveness after a sudden increase in dynamic pressure during southward IMF orientation. *J Geophys Res* **110**: A05214. <https://doi.org/10.1029/2004JA010704>.
- Caan MN, McPherron RL, Russell CT. 1973. Solar wind and substorm-related changes in the lobes of the geomagnetic tail. *J Geophys Res* **78**(34): 8087–8096. <https://doi.org/10.1029/ja078i034p08087>.
- Chambodut A, Marchaudon A, Menvielle M, El-Lemdani F, Lathuillere C. 2013. The K-derived MLT sector geomagnetic indices. *Geophys Res Lett* **40**: 4808–4812. <https://doi.org/10.1002/grl.50947>.
- Chandler MO, Fuselier SA, Lockwood M, Moore TE. 1999. Evidence of component magnetic merging equatorward of the cusp. *J Geophys Res* **104**: 22623–22648. <https://doi.org/10.1029/1999JA900175>.
- Chu X, McPherron RL, Hsu T-S, Angelopoulos V. 2015. Solar cycle dependence of substorm occurrence and duration: Implications for onset. *J Geophys Res Space Phys* **120**: 2808–2818. <https://doi.org/10.1002/2015JA021104>.
- Cliver EW, Kamide Y, Ling AG. 2000. Mountains versus valleys: Semiannual variation of geomagnetic activity. *J Geophys Res* **105**: 2413–2424. <https://doi.org/10.1029/1999JA900439>.

- Cowley SWH. 1991. Acceleration and heating of space plasmas - Basic concepts. *Ann Geophys* **9**: 176–187.
- Cowley SWH, Lockwood M. 1992. Excitation and decay of solar-wind driven flows in the magnetosphere-ionosphere system. *Ann Geophys* **10**: 103–115.
- Crooker NU, Cliver EW, Tsurutani BT. 1992. The semiannual variation of great geomagnetic storms and the postshock Russell-McPherron effect preceding coronal mass ejecta. *Geophys Res Lett* **19**(5): 429–432. <https://doi.org/10.1029/92GL00377>.
- de La Sayette P, Berthelier A. 1996. The annual-diurnal variations 1959–1988: A 30-year evaluation. *J Geophys Res* **101** (A5): 10653–10663. <https://doi.org/10.1029/96JA00165>.
- Echer E, Alves MV, Gonzalez WD. 2005. A statistical study of magnetic cloud parameters and geoeffectiveness. *J Atmos Terr Phys* **67**(10): 839–852. <https://doi.org/10.1016/j.jastp.2005.02.010>.
- Finch ID, Lockwood M. 2007. Solar wind-magnetosphere coupling functions on timescales of 1 day to 1 year. *Ann Geophys* **25**: 495–506. <https://doi.org/10.5194/angeo-25-495-2007>.
- Finch ID, Lockwood M, Rouillard AP. 2008. The effects of solar wind magnetosphere coupling recorded at different geomagnetic latitudes: Separation of directly-driven and storage/release systems. *Geophys Res Lett* **35**: L21105. <https://doi.org/10.1029/2008GL035399>.
- Karlsson SBP, Opgenoorth HJ, Eglitis P, Kauristie K, Syrjäso M, Pulkkinen TI, Lockwood M, Nakamura R, Reeves G, Romanov S. 2000. Solar wind control of magnetospheric energy content: substorm quenching and multiple onsets. *J Geophys Res* **105**: 5335–5356. <https://doi.org/10.1029/1999JA900297>.
- Kilpua EKJ, Balogh A, von Steiger R, Liu YD. 2017. Geoeffective properties of solar transients and stream interaction regions. *Space Sci Rev* **212**(3/4): 1271–1314. <https://doi.org/10.1007/s11214-017-0411-3>.
- Kokubun S, McPherron RL, Russell CT. 1977. Triggering of substorms by solar wind discontinuities. *J Geophys Res* **82**(1): 74–86. <https://doi.org/10.1029/ja082i001p00074>.
- Lee D-Y, Lyons LR, Yumoto K. 2004. Sawtooth oscillations directly driven by solar wind dynamic pressure enhancements. *J Geophys Res* **109**: A04202. <https://doi.org/10.1029/2003JA010246>.
- Le Mouél J-L, Blanter E, Chulliat A, Shnirman M. 2004. On the semiannual and annual variations of geomagnetic activity and components. *Ann Geophys* **22**: 3583–3588. <https://doi.org/10.5194/angeo-22-3583-2004>.
- Li D, Yao S. 2020. Stronger southward magnetic field and geoeffectiveness of ICMEs containing prominence materials measured from 1998 to 2011. *Astrophys J* **891**(1): 79. <https://doi.org/10.3847/1538-4357/ab7197>.
- Lockwood M. 1991. On flow reversal boundaries and cross-cap potential in average models of high latitude convection. *Planet Space Sci* **39**: 397–409. [https://doi.org/10.1016/0032-0633\(91\)90002-R](https://doi.org/10.1016/0032-0633(91)90002-R).
- Lockwood M. 2004. Solar outputs, their variations and their effects of Earth. In: “*The Sun, Solar Analogs and the Climate*”, *Proc. Saas-Fee Advanced Course, 34* by J.D. Haigh, M. Lockwood and M.S. Giampapa, Rüedi I., Güdel M., Schmutz W. (Eds.), Springer, pp. 107–304.
- Lockwood M. 2013. Reconstruction and prediction of variations in the open solar magnetic flux and interplanetary conditions. *Liv Rev Sol Phys* **10**: 4. <https://doi.org/10.12942/lrsp-2013-4>.
- Lockwood M. 2019. Does adding solar wind Poynting flux improve the optimum solar wind – magnetosphere coupling function? *J Geophys Res Space Phys* **124**(7): 5498–5515. <https://doi.org/10.1029/2019JA026639>.
- Lockwood M, Lanchester BS, Morley SK, Throp K, Milan SE, Lester M, Frey HU. 2006. Modeling the observed proton aurora and ionospheric convection responses to changes in the IMF clock angle: 2. Persistence of ionospheric convection. *J Geophys Res* **111**: A02306. <https://doi.org/10.1029/2003JA010307>.
- Lockwood M, Hairston MR, Finch ID, Rouillard AP. 2009. Transpolar voltage and polar cap flux during the substorm cycle and steady convection events. *J Geophys Res* **114**: A01210. <https://doi.org/10.1029/2008JA013697>.
- Lockwood M, Nevanlinna H, Barnard L, Owens MJ, Harrison RG, Rouillard AP, Scott CJ. 2014. Reconstruction of geomagnetic activity and near-Earth interplanetary conditions over the Past 167 years: 4. Near-Earth solar wind speed, IMF, and open solar flux. *Ann Geophys* **32**: 383–399. <https://doi.org/10.5194/angeo-32-383-2014>.
- Lockwood M, Owens MJ, Barnard LA, Bentley S, Scott CJ, Watt CE. 2016. On the origins and timescales of geoeffective IMF. *Space Weather* **14**: 406–432. <https://doi.org/10.1002/2016SW001375>.
- Lockwood M, Bentley S, Owens MJ, Barnard LA, Scott CJ, Watt CE, Allanson O. 2019a. The development of a space climatology: 1. Solar-wind magnetosphere coupling as a function of timescale and the effect of data gaps. *Space Weather* **17**: 133–156. <https://doi.org/10.1029/2018SW001856>.
- Lockwood M, Bentley S, Owens MJ, Barnard LA, Scott CJ, Watt CE, Allanson O, Freeman MP. 2019b. The development of a space climatology: 2. The distribution of power input into the magnetosphere on a 3-hourly timescale. *Space Weather* **17**: 157–179. <https://doi.org/10.1029/2018SW002016>.
- Lockwood M, Bentley S, Owens MJ, Barnard LA, Scott CJ, Watt CE, Allanson O, Freeman MP. 2019c. The development of a space climatology: 3. The evolution of distributions of space weather parameters with timescale. *Space Weather* **17**: 180–209. <https://doi.org/10.1029/2018SW002017>.
- Lockwood M, Chambodut A, Finch ID, Barnard LA, Owens MJ, Haines C. 2019d. Time-of-day/time-of-year response functions of planetary geomagnetic indices. *J Space Weather Space Clim* **9**: A20. <https://doi.org/10.1051/swsc/2019017>.
- Lockwood M, Owens MJ, Barnard LA, Haines C, Scott CJ, McWilliams KA, Coxon JC. 2020. Semi-annual, annual and Universal Time variations in the magnetosphere and in geomagnetic activity: 1. Geomagnetic data. *J Space Weather Space Clim* **10**: 23. <https://doi.org/10.1051/swsc/2020023>.
- Lühr H, Lockwood M, Sandholt PA, Hansen TL, Moretto T. 1996. Multi-instrument ground-based observations of a travelling convection vortex event. *Ann Geophys* **14**: 162–181. <https://doi.org/10.1007/s00585-996-0162-z>.
- Lukianova R. 2003. Magnetospheric response to sudden changes in solar wind dynamic pressure inferred from polar cap index. *J Geophys Res* **108**(A12): 1428. <https://doi.org/10.1029/2002JA009790>.
- Mayaud P-N. 1980. Derivation, meaning and use of geomagnetic indices. In: *Geophysical monograph*, **22**. American Geophysical Union, Washington, DC. <https://doi.org/10.1029/GM022>.
- McPherron RL, Baker DN, Pulkkinen TI, Hsu TS, Kissinger J, Chu X. 2013. Changes in solar wind–magnetosphere coupling with solar cycle, season, and time relative to stream interfaces. *J Atmos Sol-Terr Phys* **99**: 1–13. <https://doi.org/10.1016/j.jastp.2012.09.003>.
- Morley SK, Lockwood M. 2006. A numerical model of the ionospheric signatures of time-varying magnetic reconnection: 3. Quasi-instantaneous convection responses in the Cowley-Lockwood paradigm. *Ann Geophys* **24**: 961–972. <https://doi.org/10.5194/angeo-24-961-2006>.
- Palmroth M, Pulkkinen TI, Janhunen P, McComas DJ, Smith CW, Koskinen HEJ. 2004. Role of solar wind dynamic pressure in

- driving ionospheric Joule heating. *J Geophys Res* **109**: A11302. <https://doi.org/10.1029/2004JA010529>.
- Pulkkinen TI, Dimmock AP, Lakka A, Osmane A, Kilpua E, Myllys M, Tanskanen EI, Viljanen A. 2016. Magnetosheath control of solar wind–magnetosphere coupling efficiency. *J Geophys Res Space Phys* **121**: 8728–8739. <https://doi.org/10.1002/2016JA023011>.
- Russell CT, McPherron RL. 1973. Semiannual variation of geomagnetic activity. *J Geophys Res* **78**: 82–108. <https://doi.org/10.1029/JA078i001p00092>.
- Schieldge JP, Siscoe GL. 1970. A correlation of the occurrence of simultaneous sudden magnetospheric compressions and geomagnetic bay onsets with selected geophysical indices. *J Atmos Terr Phys* **32(11)**: 1819–1830. [https://doi.org/10.1016/0021-9169\(70\)90139-x](https://doi.org/10.1016/0021-9169(70)90139-x).
- Stauning P, Troshichev OA. 2008. Polar cap convection and PC index during sudden changes in solar wind dynamic pressure. *J Geophys Res* **113**: A08227. <https://doi.org/10.1029/2007JA012783>.
- Taylor JR, Lester M, Yeoman TK. 1994. A superposed epoch analysis of geomagnetic storms. *Ann Geophys* **12(7)**: 612–624. <https://doi.org/10.1007/s00585-994-0612-4>.
- Vasyliunas VM, Kan JR, Siscoe GL, Akasofu S-I. 1982. Scaling relations governing magnetospheric energy transfer. *Planet Space Sci* **30**: 359–365. [https://doi.org/10.1016/0032-0633\(82\)90041-1](https://doi.org/10.1016/0032-0633(82)90041-1).
- Webb DF, Cliver EW, Crooker NU, St. Cyr OC, Thompson BJ. 2000. Relationship of halo coronal mass ejections, magnetic clouds, and magnetic storms. *J Geophys Res Space Phys* **105(A4)**: 7491–7508. <https://doi.org/10.1029/1999JA000275>.
- Xie H, Gopalswamy N, Manoharan PK, Lara A, Yashiro S, Lepri S. 2006. Long-lived geomagnetic storms and coronal mass ejections. *J Geophys Res Space Phys* **111(A1)**: A01103. <https://doi.org/10.1029/2005JA011287>.
- Yue C, Zong QG, Zhang H, Wang YF, Yuan CJ, Pu ZY, Fu SY, Lui ATY, Yang B, Wang CR. 2010. Geomagnetic activity triggered by interplanetary shocks. *J Geophys Res* **115**: A00I05. <https://doi.org/10.1029/2010JA015356>.
- Zhao H, Zong QG. 2012. Seasonal and diurnal variation of geomagnetic activity: Russell-McPherron effect during different IMF polarity and/or extreme solar wind conditions. *J Geophys Res* **117**: A11222. <https://doi.org/10.1029/2012JA017845>.

Appendix

Relationships between the am index and the transpolar voltage

Figure 4 of the main text presents a scatter plot of daily means of the transpolar voltage Φ_{PC} against the means of the am index for the same day. The Φ_{PC} values are derived from observations in 2001–2002 by the DMSP satellites and are normalised to an ideal satellite path along the 06–18 MLT polar cap diameter using the procedure of Lockwood et al. (2009). The error bars in the plot are plus and minus one standard error in the means. The mauve line is the best-fit 3rd order polynomial fit and the grey area is bounded by the 2-sigma uncertainties in that fit.

The procedure employed to make the fit was as follows. The data points were fitted 10,000 times using a 3rd-order polynomial fit. For each fit, every data point was shifted in both am and Φ_{PC} , by an error drawn at random from a Gaussian distribution with mean value equal to the observed mean value for the point in question and of standard deviation equal to the observed standard deviation around that mean. The c.d.f. of the ensemble of fitted am values at each value Φ_{PC} was then computed and the best-fit for that Φ_{PC} then taken to be the median value of this distribution. The maximum and minimum uncertainties were taken to be the 5% and 95% percentiles of these distributions (i.e. the upper and lower 2-sigma points of the ensemble).

The best fit (ensemble median) is

$$am = (4.61 \times 10^{-5})\Phi_{PC}^3 + (2.1210^{-3})\Phi_{PC}^2 + 0.427\Phi_{PC} - 2.13, \quad (\text{A.1})$$

where Φ_{PC} is in kV and am is in nT. The upper 2-sigma level is

$$[am]_{\max} = (9.15 \times 10^{-5})\Phi_{PC}^3 - (2.40 \times 10^{-3})\Phi_{PC}^2 + 0.554\Phi_{PC} + 3.94 \quad (\text{A.2})$$

and the lower 2-sigma level is

$$[am]_{\min} = (-1.72 \times 10^{-5})\Phi_{PC}^3 + (9.30 \times 10^{-3})\Phi_{PC}^2 + 0.196\Phi_{PC} - 7.09. \quad (\text{A.3})$$

In addition, in Figure A.1 we present the same data but plotted with am as the abscissa (along the horizontal axis) and Φ_{PC} as

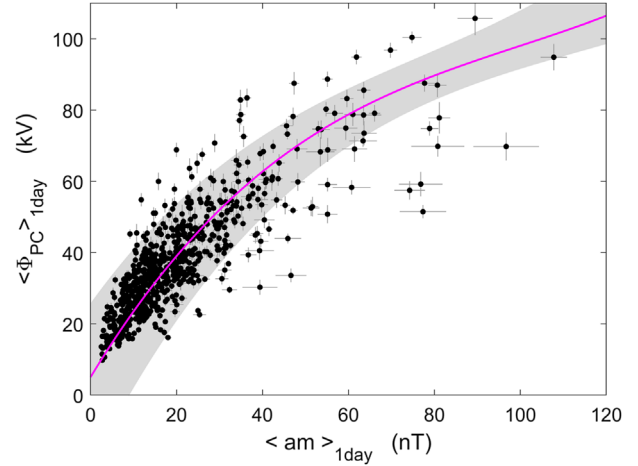


Fig. A.1. Scatter plot of daily means of the transpolar voltage Φ_{PC} , as determined for 2001–2002 by the DMSP satellites and normalised for the satellite track to an ideal 06–18 MLT path using the procedure of Lockwood et al. (2009), as a function of the means of the am index for the same day. The error bars are plus and minus one standard error in the means. The mauve line is the best-fit 3rd order polynomial fit of Φ_{PC} and the grey area is bounded by the 2-sigma uncertainty level in the fit.

the ordinate (along the vertical axis). The fit procedure described above was repeated but this time the c.d.f. of Φ_{PC} was taken at each fitted am value and the best fit, and its 2-sigma uncertainties, derived in the same way. This gives the corresponding polynomial fits to allow us to convert am into the corresponding Φ_{PC} value. The best fit is

$$\Phi_{PC} = (6.68 \times 10^{-5})am^3 - (1.66 \times 10^{-2})am^2 + 1.89am + 6.17 \quad (\text{A.4})$$

the upper 2-sigma level is

$$[\Phi_{PC}]_{\max} = (9.64 \times 10^{-5})am^3 - (1.72 \times 10^{-2})am^2 + 1.71am + 18.31 \quad (\text{A.5})$$

and the lower 2-sigma level is

$$[\Phi_{PC}]_{\min} = (6.15 \times 10^{-5})am^3 - (1.78 \times 10^{-2})am^2 + 2.13am - 7.72 \quad (\text{A.6})$$

Cite this article as: Lockwood M, McWilliams KA, Owens MJ, Barnard LA, Watt CE, et al. 2020. Semi-annual, annual and Universal Time variations in the magnetosphere and in geomagnetic activity: 2. Response to solar wind power input and relationships with solar wind dynamic pressure and magnetospheric flux transport. *J. Space Weather Space Clim.* **10**, 30.